



PRODUCT GUIDE

Contents

RECOMMENDED TEMPERATURE GUIDE	3
CLIMATE CLASS	3
TYPE OF COOLING	3
ECODESIGN DIRECTIVE	4
STAINLESS STEEL GASTRONORM CONTAINERS	5 - 6

BAR EQUIPMENT

PAGE

BOTTLE COOLING	8 - 18
ICE MAKERS	19

STORAGE REFRIGERATION

PAGE

UNDERCOUNTERS	21 - 23
UPRIGHTS	24 - 26
COMPACT COUNTER STORAGE	27 - 29
COMPACT SALADETTES	30 - 33
COUNTER STORAGE	34 - 40
SNACK COUNTERS (LOW HEIGHT)	41
PIZZA PREP	42 - 46
BLAST CHILLERS	47
CHEST FREEZERS	48 - 49

DISPLAY REFRIGERATION

PAGE

UPRIGHT DISPLAY REFRIGERATORS & FREEZERS	51 - 54
UPRIGHT PATISSERIE DISPLAY	55 - 56
COUNTER TOP DISPLAY (& HEATED VERSION)	57 - 62
SERVE OVER DISPLAY (& HEATED VERSION)	63 - 70
GRAB AND GO	71
MULTIDECKS	72
BUFFET DISPLAY (& HEATED VERSION)	73 - 77
DISPLAY CHEST FREEZERS	78

MEDICAL EQUIPMENT

PAGE

PHARMACY REFRIGERATOR	80
-----------------------	----

COOKING & PREPARATION

PAGE

MICROWAVES	82
SNACK EQUIPMENT	83 - 95
MIXERS	96
COMBINATION OVENS	97 - 98

SERVICE EQUIPMENT

PAGE

CATERING URNS	100
WATER BOILERS	101

WAREWASHING

PAGE

STORM RANGE	103 - 108
-------------	-----------

Recommended Temperature Guide

Please note apart from Blast Chillers & Freezers, all refrigerated storage and display cabinets are holding cabinets, i.e. designed to store or display pre-chilled or pre-frozen foods only. Heated display cabinets are designed to hold pre-heated foods. Display cabinets are designed for short-term display of foods. After service, chilled food should be moved to a chilled storage cabinet.

Note: only specific cabinets control humidity and are designed to resist corrosion. Below is given for guidance only. For further details please contact the Food Standards Agency.

Category	Temperature
Hot foods	+65°C (minimum 63°C)
Chilled foods	+3°C / +5°C (maximum 8°C)
Fresh meat	-2°C / +2°C
Fresh fish	-1°C / +1°C *
Frozen foods	-18°C / -22°C
Soft scoop ice cream	-12°C / -18°C (depends on type of ice cream)
Wrapped ice cream	-20°C / -24°C
Cans & bottled beverages	Personal choice (generally +1°C / +10°C)
White wine	Personal choice (generally +4°C / +12°C)
Red wine	Personal choice (generally +14°C / +20°C)

* Only specific cabinets control humidity and are designed to resist corrosion.

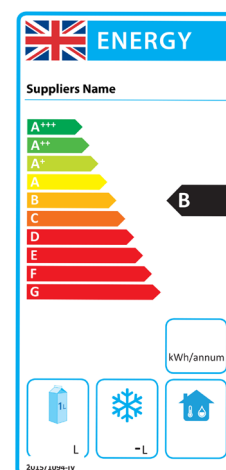
Climate Class

All fridges have a climate class, which tells you the range of room temperature within it can cope.

- Climate Class 3 - ambient of 25°C with 60% RH
- Climate Class 4 - ambient of 30°C with 55% RH
- Climate Class 5 - ambient of 40°C with 40% RH

and

- N Class (temperature class) - ambient of +16°C and +32°C.
- SN Class (extended temperature class) - ambient of +10°C and +32°C.
- ST Class (sub-tropical class) - ambient of +18°C and +38°C.
- T Class (Tropical class) - ambient of +18°C and +43°C.



Type of Cooling

- **Static** – cooling provided without any fan assistance, generally through a roll bond (plate), shelves (freezer) or skin evaporator.
- **Fan assisted** – same evaporator as static but with a fan installed to assist with air movement for more even cooling throughout the cabinet.
- **Ventilated** – cooling provided by using a fin type evaporator and fan assistance this is a more efficient cooling process than just fan assisted.

Ecodesign Directive

The Eco-design Directive which applies to a wide variety of Professional Refrigerated Storage Cabinets has seen some changes since it was first introduced into this product category on the 1st July 2016. Blizzard continuously works to ensure that all our products comply with relevant legislation, and we have seen a positive effect of the legislation with more energy efficiency cabinets being produced.

The most efficient energy rating for a professional refrigerator is A+++, and the lowest on the label is a G, however, the minimum energy performance rating (MEP) is an E classification. It is important that when comparing energy efficiency marks, you only compare similar cabinets as the testing criteria is different for different types of equipment.

1st March 2021 saw further changes to the Eco-design Directive which will widen the scope of cabinets to include cabinets with a direct sales function. This means that most display refrigeration cabinets will now require an energy efficiency rating, the energy label is rated from **A to G**. Blizzard is working tirelessly to comply with the new standards and are testing to the correct testing standards for the applications for which they are being used.

For all the latest information please refer to our website.

BREXIT changes

1st January 2021 saw the end of the transition period and new legislation is now applicable in the UK. All units falling under the EU Eco-design and energy labelling directive, now fall under the UK Eco-design and energy labelling regulations, the initial change is with the energy labels having the UK flag and information in the English language. Trading with the EU and Northern Ireland also changed with all items supplied outside the UK and to Northern Ireland are supplied under DAP incoterms.

The UKCA mark also was introduced to indicate that equipment supplied for the UK market conforms with any applicable UK regulations. The CE marking on some products will remain valid for use in the UK until 1st January 2023.

Recent F Gas changes and the effects of High GWP Refrigerants

F Gas regulations places restrictions on the use of some HFC refrigerants which have a high GWP (Global Warming Potential). This regulation sets limits on the products used in specific types of systems with an aim to reduce the contribution of refrigerant gases to global warming.

1st January 2022 saw a further restriction with a mandatory limit of 150GWP being introduced which effectively prevents the manufacture of products containing a refrigerant with a GWP higher than 150. Blizzard products are now using hydrocarbon refrigerants like R600A and R290, which have a very low GWP (Global Warming Potential) and comply fully with the latest legislation.

Existing equipment

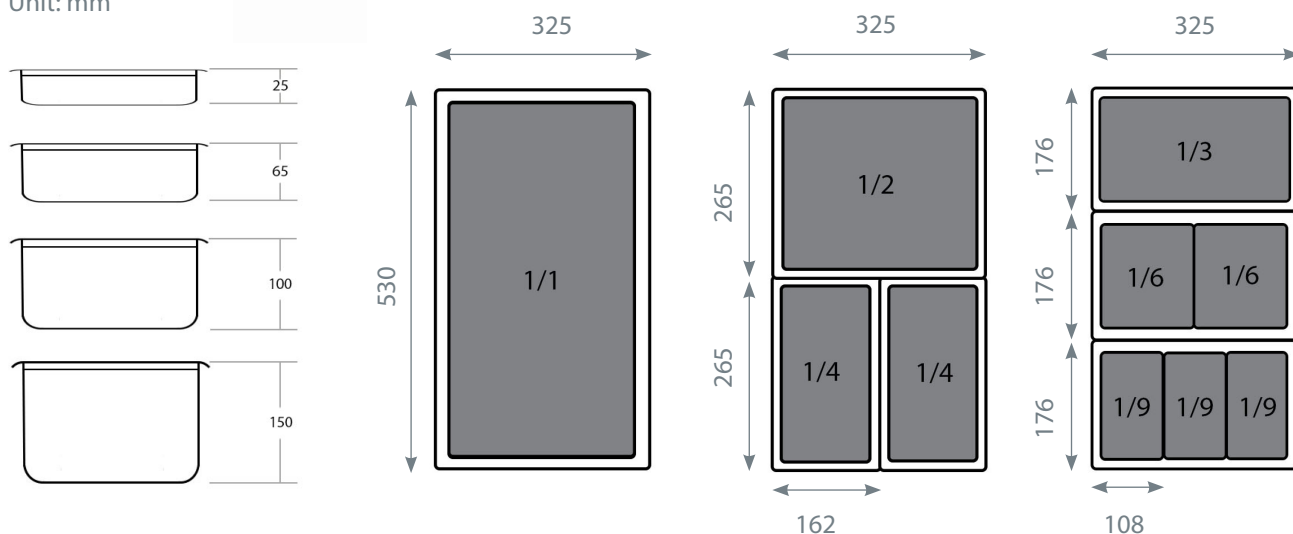
Please be aware that the refrigerant gas within a system should not need replacing regularly and should last the lifetime of the appliance, the refrigerant will only need replacing if a component or pipework within the refrigeration circuit fails. If your cabinet was initially manufactured using R404A / R452A / R134A refrigerant you do not need to replace the cabinet, if it ever needs a repair involving the refrigerant gas, there are suitable alternative lower GWP refrigerant gases available to ensure the cabinet can still be repaired. It is important that you seek the advice of a qualified refrigeration engineer to carry out any repairs.

Stainless Steel Gastronorm Containers

*Cost
Effective
Range*



Unit: mm



MODEL	DESCRIPTION	SIZE (H x W mm)
1/1 Range		
GN-1120	1/1 20 mm Deep Gastronorm Pan	530 x 325
GN-1140	1/1 40 mm Deep Gastronorm Pan	530 x 325
GN-1165	1/1 65 mm Deep Gastronorm Pan	530 x 325
GN-11100	1/1 100 mm Deep Gastronorm Pan	530 x 325
GN-11150	1/1 150 mm Deep Gastronorm Pan	530 x 325
GN-11150P	1/1 150 mm Deep Perforated Gastronorm Pan	530 x 325
GN-11200	1/1 200 mm Deep Gastronorm Pan	530 x 325
GN-11LID	1/1 Gastronorm Lid	530 x 325
GN-11NLID	1/1 Gastronorm Lid With Notch/Cutout	530 x 325
GN-11SPACER	1/1 Spacer Bar	530 x 15
1/2 Range		
GN-1220	1/2 20 mm Deep Gastronorm Pan	265 x 325
GN-1240	1/2 40 mm Deep Gastronorm Pan	265 x 325
GN-1265	1/2 65 mm Deep Gastronorm Pan	265 x 325
GN-12100	1/2 100 mm Deep Gastronorm Pan	265 x 325
GN-12150	1/2 150 mm Deep Gastronorm Pan	265 x 325
GN-12150P	1/2 150 mm Deep Perforated Gastronorm Pan	265 x 325
GN-12200	1/2 200 mm Deep Gastronorm Pan	265 x 325
GN-12LID	1/2 Gastronorm Lid	265 x 325
GN-12NLID	1/2 Gastronorm Lid With Notch/Cutout	265 x 325

MODEL	DESCRIPTION	SIZE (H x W mm)
1/3 Range		
GN-1320	1/3 20 mm Deep Gastronorm Pan	176 x 325
GN-1340	1/3 40 mm Deep Gastronorm Pan	176 x 325
GN-1365	1/3 65 mm Deep Gastronorm Pan	176 x 325
GN-13100	1/3 100 mm Deep Gastronorm Pan	176 x 325
GN-13150	1/3 150 mm Deep Gastronorm Pan	176 x 325
GN-13150P	1/3 150 mm Deep Perforated Gastronorm Pan	176 x 325
GN-13200	1/3 200 mm Deep Gastronorm Pan	176 x 325
GN-13LID	1/3 Gastronorm Lid	176 x 325
GN-13NLID	1/3 Gastronorm With Notch/Cutout	176 x 325
GN-13SPACER	1/3 Spacer Bar	25 x 330
1/4 Range		
GN-1420	1/4 20 mm Deep Gastronorm Pan	162 x 265
GN-1440	1/4 40 mm Deep Gastronorm Pan	162 x 265
GN-1465	1/4 65 mm Deep Gastronorm Pan	162 x 265
GN-14100	1/4 100 mm Deep Gastronorm Pan	162 x 265
GN-14150	1/4 150 mm Deep Gastronorm Pan	162 x 265
GN-14200	1/4 200 mm Deep Gastronorm Pan	162 x 265
GN-14LID	1/4 Gastronorm Lid	162 x 265
GN-14NLID	1/4 Gastronorm Lid With Notch/Cutout	162 x 265
GN-14SPACER	1/4 Spacer Bar	25 x 260
1/6 Range		
GN-1665	1/6 65 mm Deep Gastronorm Pan	162 x 176
GN-16100	1/6 100 mm Deep Gastronorm Pan	162 x 176
GN-16150	1/6 150 mm Deep Gastronorm Pan	162 x 176
GN-16200	1/6 200 mm Deep Gastronorm Pan	162 x 176
GN-16LID	1/6 Gastronorm Lid	162 x 176
GN-16NLID	1/6 Gastronorm Lid With Notch/Cutout	162 x 176
1/9 Range		
GN-1965	1/9 65 mm Deep Gastronorm Pan	108 x 176
GN-19100	1/9 100 mm Deep Gastronorm Pan	108 x 176
GN-19150	1/9 150 mm Deep Gastronorm Pan	108 x 176
GN-19LID	1/9 Gastronorm Lid	108 x 176
2/1 Range		
GN-21100	2/1 100 mm Deep Gastronorm Pan	530 x 650
GN-21150	2/1 150 mm Deep Gastronorm Pan	530 x 650
GN-21LID	2/1 Gastronorm Lid	530 x 650
2/3 Range		
GN-2340	2/3 40 mm Deep Gastronorm Pan	355 x 325
GN-2365	2/3 65 mm Deep Gastronorm Pan	355 x 325
GN-23100	2/3 100 mm Deep Gastronorm Pan	355 x 325
GN-23150	2/3 150 mm Deep Gastronorm Pan	355 x 325
GN-23LID	2/3 Gastronorm Lid	355 x 325
Napoli Pan		
GN-NAPOLI	360mm Deep Napoli Pan 5L	165 x 118



BAR EQUIPMENT

**Mini Bars | Bottle Coolers | Glass Frosters
Wine Cabinets | Ice Makers**

Whether a hotel room mini bar or a full-scale pub fit out we have all the bar equipment you could possibly need. Chill your drinks in one of our back-bar coolers before they're poured onto ice made in one of our ice makers. We only stock the very best in bar equipment to ensure ultimate product satisfaction.

Mini Bars

BMB30



BMB40



FEATURES

- Black laminated exterior; White ABS interior
- Absorption cooling
- Silent operation
- Reversible door
- Adjustable shelf
- Door shelf
- Lock fitted as standard
- Internal LED illumination
- Replaceable door gasket

TECHNICAL SPECIFICATIONS

- Controller: Manual thermostat
- Cooling: Absorption
- Defrost: Automatic
- Refrigerant: NH₃
- Climate Class: 4
- Temperature Range: +2°C ~ +8°C
- Power Supply: 13amp

MODEL	SHELF	DOOR SHELF	CAPACITY (Bottles*)	GROSS CAPACITY	EXT. DIMENSIONS (H x W x D mm)	ENERGY RATING	POWER CONSUMPTION	KWH /ANNUM	WEIGHT (kg)
BMB30	1	2	10	30L	480 x 400 x 420	D	65W	270	14.6
BMB40	2	2	24	40L	550 x 400 x 440	D	65W	272	16.6

* based on 330ml bottles



Glass Door Mini Bars

BMB30G



BMB40G



FEATURES

- Black laminated exterior; White ABS interior
- Double glazed glass door
- Absorption cooling
- Silent operation
- Reversible door
- Adjustable shelf
- Lock fitted as standard
- Internal LED illumination when door opens († see option below)
- Replaceable door gasket

TECHNICAL SPECIFICATIONS

- Controller: Manual thermostat
- Cooling: Absorption
- Defrost: Automatic
- Refrigerant: NH₃
- Climate Class: 4
- Temperature Range: +5°C ~ +12°C
- Power Supply: 13amp

MODEL	SHELF	CAPACITY (Bottles*)	GROSS CAPACITY	EXT. DIMENSIONS (H x W x D mm)	ENERGY RATING	POWER CONSUMPTION	KWH /ANNUM	WEIGHT (kg)
BMB30G	1	10	30L	480 x 400 x 420	G	65W	277	16.6
BMB40G	2	24	40L	550 x 400 x 440	G	65W	285	18.8

* based on 330ml bottles



Bar Bottle Coolers

Standard Black, Hinged Door(s)

BAR1



BAR2



BAR3



Optional Wine Shelf

Shelf size

BAR1: 490(W) x 360(D) mm

BAR2: 395(W) x 330(D) mm

BAR3: side 395(W) x 330(D) mm,
centre 445(W) x 330(D) mm



Single door - each shelf holds 5 bottles



2 & 3 doors - each shelf holds 4 bottles

FEATURES

Black laminated exterior; Aluminium stippled interior

Self closing, double glazed door

2 adjustable shelves per door

Lock fitted as standard

Internal LED illumination

Replaceable door gasket

TECHNICAL SPECIFICATIONS

Controller: Digital controller with temperature display

Cooling: Fan assisted

Defrost: Automatic

Refrigerant: R600a

Climate Class: 4

Temperature Range: +4°C ~ +12°C

Power Supply: 13amp

MODEL	DOOR	CAPACITY (Bottles*)	GROSS CAPACITY	EXT. DIMENSIONS (H x W x D mm)	ENERGY RATING	POWER CONS.	KWH /ANNUM	DECIBELS	WEIGHT (kg)
BAR1	1	135	128L	900 x 598 x 520	D	165W	527	53dBA	44
BAR2	2	202	200L	900 x 903 x 520	D	185W	564	54dBA	59
BAR3	3	338	310L	900 x 1353 x 520	F	320W	1075	59dBA	91

* based on 275ml bottles

Note: fully opened doors increase width by 5mm each side



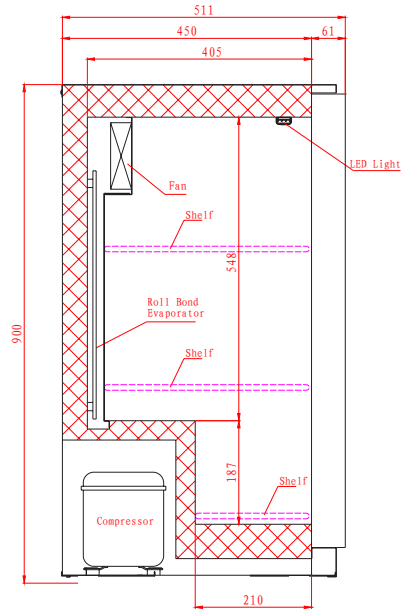
OPTIONAL EXTRAS

Wine Shelf BAR1	W4-SHELF05
Wine Shelf BAR2/BAR3	W4-SHELF06
Wine Shelf (middle) BAR3	W4-SHELF07

Bar Bottle Coolers

Standard Black, Sliding Doors

BAR2SL



Shelf size

BAR2SL: 395(W) x 330(D) mm
 BAR3SL: side 395(W) x 330(D) mm,
 centre 445(W) x 330(D) mm

BAR3SL



FEATURES

- Black laminated exterior; Aluminium stippled interior
- Self closing, double glazed door
- 2 adjustable shelves per door
- Lock fitted as standard
- Internal LED illumination

TECHNICAL SPECIFICATIONS

Controller:	Digital controller with temperature display
Cooling:	Fan assisted
Defrost:	Automatic
Refrigerant:	R600a
Climate Class:	4
Temperature Range:	+4°C ~ +12°C
Power Supply:	13amp

MODEL	DOOR	CAPACITY (Bottles*)	GROSS CAPACITY	EXT. DIMENSIONS (H x W x D mm)	ENERGY RATING	POWER CONS.	KWH /ANNUM	DECIBELS	WEIGHT (kg)
BAR2SL	2	202	200L	900 x 903 x 511	D	185W	580	54dBA	59
BAR3SL	3	338	310L	900 x 1353 x 511	F	320W	1119	59dBA	91

* based on 275ml bottles



OPTIONAL EXTRAS	
Wine Shelf BAR2/BAR3	W4-SHELF06
Wine Shelf (middle) BAR3	W4-SHELF07

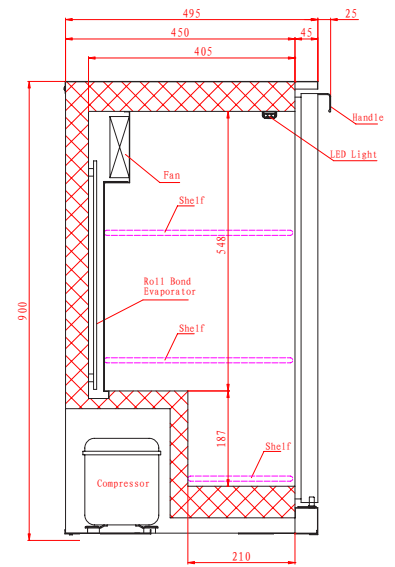
Bar Bottle Coolers

Stainless Steel, Hinged Door(s)

BAR1SS



BAR2SS



BAR3SS



Shelf size

BAR1: 490(W) x 360(D) mm
 BAR2: 395(W) x 330(D) mm
 BAR3: side 395(W) x 330(D) mm,
 centre 445(W) x 330(D) mm

FEATURES

- Stainless steel front; top and sides painted silver; Aluminium stippled interior
- Self closing, double glazed door
- 2 adjustable shelves per door
- Lock fitted as standard
- Internal LED illumination
- Replaceable door gasket

TECHNICAL SPECIFICATIONS

Controller:	Digital controller with temperature display
Cooling:	Fan assisted
Defrost:	Automatic
Refrigerant:	R600a
Climate Class:	4
Temperature Range:	+4°C ~ +12°C
Power Supply:	13amp

MODEL	DOOR	CAPACITY (Bottles*)	GROSS CAPACITY	EXT. DIMENSIONS (H x W x D mm)	ENERGY RATING	POWER CONS.	KWH /ANNUM	DECIBELS	WEIGHT (kg)
BAR1SS	1	135	128L	900 x 598 x 520	D	165W	527	53dBA	48
BAR2SS	2	202	200L	900 x 903 x 520	D	185W	564	54dBA	65
BAR3SS	3	338	310L	900 x 1353 x 520	F	320W	1075	59dBA	95

* based on 275ml bottles

Note: fully opened doors increase width by 5mm each side



OPTIONAL EXTRAS

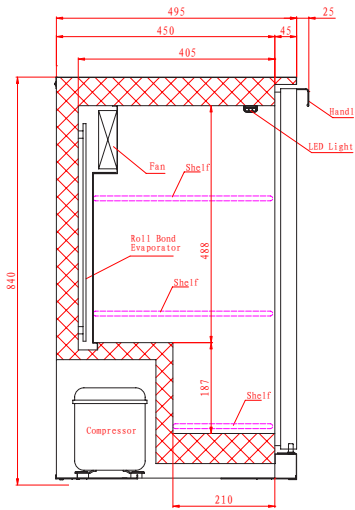
Wine Shelf BAR1	W4-SHELF05
Wine Shelf BAR2/BAR3	W4-SHELF06
Wine Shelf (middle) BAR3	W4-SHELF07

Low Height Bar Bottle Coolers

Standard Black, Hinged Door(s), 840mm Height



LOWBAR1



LOWBAR2

Shelf size

LOWBAR1: 490(W) x 360(D) mm

LOWBAR2: 395(W) x 330(D) mm

LOWBAR3: side 395(W) x 330(D) mm,
centre 445(W) x 330(D) mm



LOWBAR3

840mm
height

FEATURES

- Black laminated exterior; Aluminium stippled interior
- Self closing, double glazed door
- 2 adjustable shelves per door
- Lock fitted as standard
- Internal LED illumination
- Replaceable door gasket

TECHNICAL SPECIFICATIONS

- Controller: Digital controller with temperature display
- Cooling: Fan assisted
- Defrost: Automatic
- Refrigerant: R600a
- Climate Class: 4
- Temperature Range: +4°C ~ +12°C
- Power Supply: 13amp

MODEL	DOOR	CAPACITY (Bottles*)	GROSS CAPACITY	EXT. DIMENSIONS (H x W x D mm)	ENERGY RATING	POWER CONS.	KWH /ANNUM	DECIBELS	WEIGHT (kg)
LOWBAR1	1	108	117L	840 x 598 x 520	E	125W	536	53dBA	42
LOWBAR2	2	168	182L	840 x 903 x 520	D	140W	550	54dBA	56
LOWBAR3	3	276	280L	840 x 1353 x 520	F	270W	1059	59dBA	80

* based on 275ml bottles Note: fully opened doors increase width by 5mm each side



OPTIONAL EXTRAS

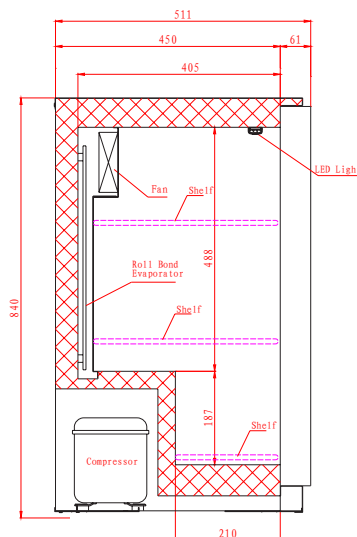
Wine Shelf BAR1	W4-SHELF05
Wine Shelf BAR2/BAR3	W4-SHELF06
Wine Shelf (middle) BAR3	W4-SHELF07

Low Height Bar Bottle Coolers

Standard Black, Sliding Doors, 840mm Height



LOWBAR2SL



Shelf size

LOWBAR2SL: 395(W) x 330(D) mm

LOWBAR3SL: side 395(W) x 330(D) mm, centre 445(W) x 330(D) mm

LOWBAR3SL



FEATURES

- Black laminated exterior; Aluminium stippled interior
- Self closing, double glazed door
- 2 adjustable shelves per door
- Lock fitted as standard
- Internal LED illumination

TECHNICAL SPECIFICATIONS

- Controller: Digital controller with temperature display
- Cooling: Fan assisted
- Defrost: Automatic
- Refrigerant: R600a
- Climate Class: 4
- Temperature Range: +4°C ~ +12°C
- Power Supply: 13amp

MODEL	DOOR	CAPACITY (Bottles*)	GROSS CAPACITY	EXT. DIMENSIONS (H x W x D mm)	ENERGY RATING	POWER CONS.	KWH /ANNUM	DECIBELS	WEIGHT (kg)
LOWBAR2SL	2	168	181L	840 x 903 x 511	E	140W	670	54dBA	57
LOWBAR3SL	3	276	280L	840 x 1353 x 511	G	270W	1192	59dBA	81

* based on 275ml bottles



OPTIONAL EXTRAS

Wine Shelf BAR2/BAR3	W4-SHELF06
Wine Shelf (middle) BAR3	W4-SHELF07

Bar Bottle Coolers

Standard Black, Hinged Door(s), 1815mm Height

BAR10



Optional Wine Shelf



Single door - each shelf holds 5 bottles



Double door - each shelf holds 4 bottles

BAR20



FEATURES

Black laminated exterior; stainless steel interior

5 adjustable chrome shelves per door

Double glazed door

LED lighting down both sides; BAR20 also has LED across the top

4 adjustable feet

Lock fitted as standard

BAR10 - reversible door

Replaceable door gasket

TECHNICAL SPECIFICATIONS

Controller: Digital controller with temperature display

Cooling: Fan assisted

Defrost: Off cycle defrost

Refrigerant: R290

Climate Class: 4

Temperature Range: +3°C ~ +10°C

Decibels: 60dBA

Power Supply: 13amp

MODEL	DOOR	CAPACITY (Bottles*)	GROSS CAPACITY	EXT. DIMENSIONS (H x W x D mm)	ENERGY RATING	POWER CONSUMPTION	KWH /ANNUM	WEIGHT (kg)
BAR10	1	324	260L	1815 x 600 x 515	E	268W	894	104
BAR20	2	492	417L	1815 x 920 x 515	F	418W	1456	140

* based on 275ml bottles



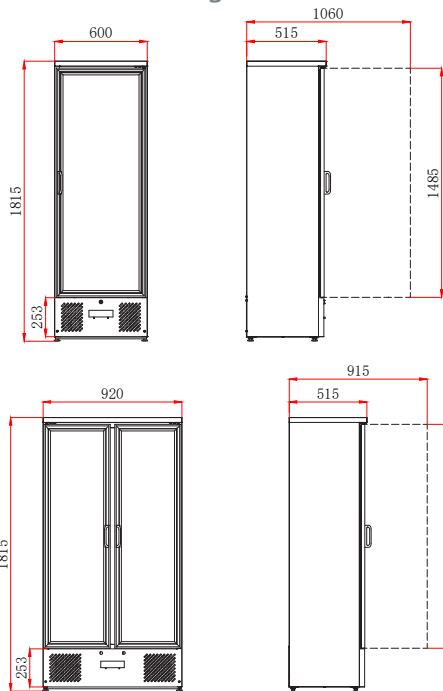
OPTIONAL EXTRAS

Wine Shelf BAR10	X1-WINESHELF10
Wine Shelf BAR20	X1-WINESHELF20

Bar Bottle Coolers

Stainless Steel, Hinged Door(s), 1815mm Height

BAR10SS



BAR20SS



FEATURES

- Stainless steel exterior
- Mirrored stainless steel interior
- 5 adjustable chrome shelves per door
- Double glazed doors
- LED lighting down both sides; BAR20SS also has LED across the top
- 4 adjustable feet
- Lock fitted as standard
- BAR10SS - reversible door
- Replaceable door gasket

TECHNICAL SPECIFICATIONS

Controller:	Digital controller with temperature display
Cooling:	Fan assisted
Defrost:	Off cycle defrost
Refrigerant:	R290
Climate Class:	4
Temperature Range:	+3°C ~ +10°C
Power Supply:	13amp

MODEL	DOOR	CAPACITY (Bottles*)	GROSS CAPACITY	EXT. DIMENSIONS (H x W x D mm)	ENERGY RATING	POWER CONSUMPTION	KWH /ANNUM	WEIGHT (kg)
BAR10SS	1	324	260L	1815 x 600 x 515	E	268W	894	110
BAR20SS	2	492	417L	1815 x 920 x 515	F	418W	1456	150

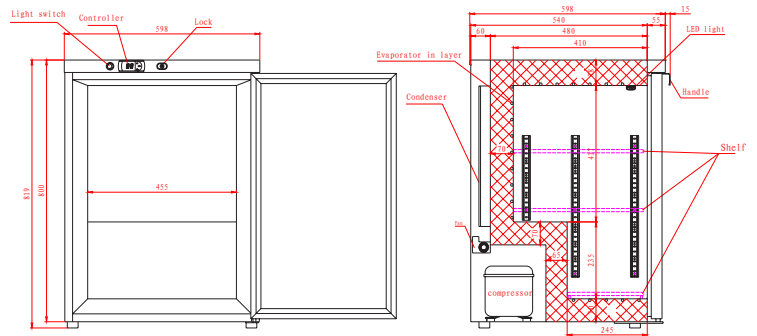
* based on 275ml bottles



OPTIONAL EXTRAS	
Wine Shelf BAR10	X1-WINESHELF10
Wine Shelf BAR20	X1-WINESHELF20

Glass Froster

GF140



FEATURES

- High grade 304 stainless steel exterior
- White laminated interior
- Height adjustable from 819 – 850mm
- Lock fitted as standard
- Adjustable shelves
- Replaceable door gasket

TECHNICAL SPECIFICATIONS

- Controller: Digital controller with temperature display
- Cooling: Static
- Defrost: Manual
- Refrigerant: R600a
- Climate Class: 4
- Temperature Range: -5°C ~ -15°C
- Power Supply: 13amp

MODEL	STORAGE CAPACITY	GROSS CAPACITY	EXT. DIMENSIONS (H x W x D mm)	POWER CONSUMPTION	DECIBELS	WEIGHT (kg)
GF140	112 glasses (Ø 6cm, max height 175mm)	105L	819 x 598 x 613	135W	53dBA	47

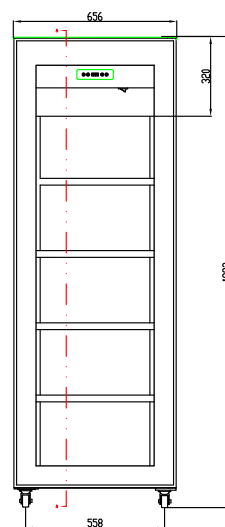
OPTIONAL EXTRAS

- Stacking kit
- M4-UCRSTACK



Wine Cooler

WD400



FEATURES

- Stainless steel body base
- Brilliant Internal LED lighting on sides
- 9 adjustable chrome scalloped wine shelves as standard; Flat shelf available (see below option)
- Front curved glass door
- 4 sides triple glazed glass
- 4 castors, 2 with brakes
- On / Off Switch

TECHNICAL SPECIFICATIONS

Controller:	Digital controller with temperature display
Cooling:	Ventilated
Defrost:	Automatic
Refrigerant:	R290
Climate Class:	4
Temperature Range:	+5°C ~ +18°C
Decibels:	55dBA
Power Supply:	13amp

MODEL	SHELVES	GROSS CAPACITY	EXT. DIMENSIONS (H x W x D mm)	ENERGY RATING	POWER CONSUMPTION	KWH /ANNUM	WEIGHT (kg)
WD400	9	400L / 81 bottles*	1892 x 656 x 653	C	500W	2672	186

* 750ml bottles

OPTIONAL EXTRAS

Flat shelf B4-SHELF270

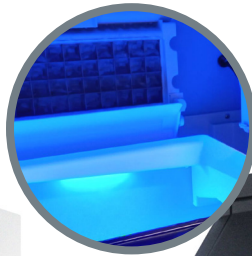


Ice Maker

BIM40



BIM90

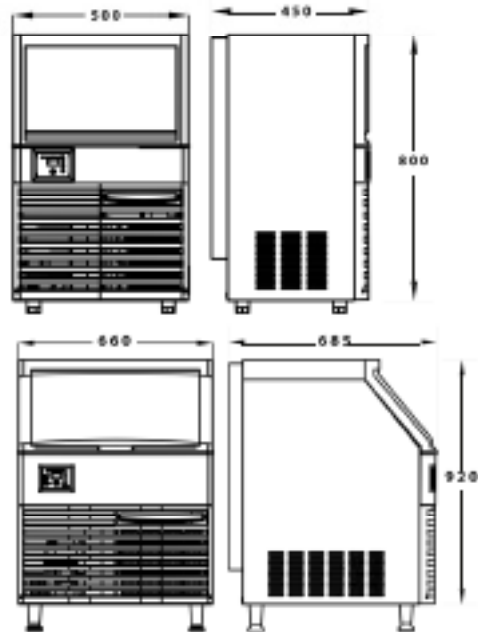


Blue LED lighting on both BIM40 & BIM90 models

Remember, fit a water filter in line with your ice machine, run a cleaning solution through your machine regularly, and clean the condenser regularly. Following these simple procedures will give your ice machine a long and economical life.

FEATURES

- Stainless Steel & ABS Body
- Produces Cubed Ice
- Low Water Consumption In Line With UK Regulations
- Easy to use electronic controls
- 10-20 minute cycle
- Fully automatic operation
- Cleaning cycle and removeable condenser filter
- Integrated LED lighting
- Vertical evaporator
- Refrigerant - R290



MODEL	PRODUCTION / 24HRS (kg)	STORAGE (kg)	EXT. DIMENSIONS (H x W x D mm)	POWER SUPPLY	POWER CONSUMPTION	WEIGHT (kg)
BIM40	36	15	800 x 500 x 450	13amp	310	40
BIM90	95	36	920 x 660 x 685	13amp	625	66

OPTIONAL EXTRAS	
Universal stand (BIM40 ONLY)	G2-STU
External Drain Pump	K6-PUMP010
Water Filter Kit	F1-IXVENDKIT





STORAGE REFRIGERATION

**Under Counters | Uprights | Compact Counter Storage | Compact Saladettes
Counter Storage | Snack Counters (Low Height) | Pizza Prep
Blast Chillers | Chest Freezers**

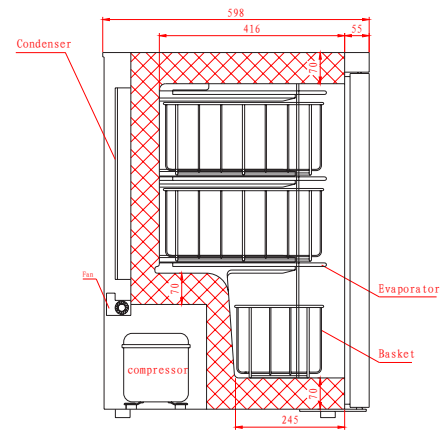
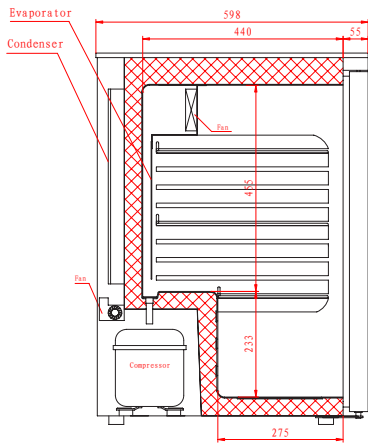
Storage refrigeration is all about maximising the space available and with our range of under counters, uprights, snack counters, chest freezers and more you're sure to make the most of every inch of your back of house/prep space. Why not check out the new UCFR280 which combines a perfect work surface and flexibility to have both a freezer & refrigerated unit.

Under Counter Refrigeration

UCR140WH



UCF140WH



FEATURES

- White laminated exterior
- ABS interior
- Height adjustable from 819 – 850mm
- Reversible door
- Lock fitted as standard
- UCR140WH - adjustable shelves
- UCF140WH - fixed shelves with baskets
- Replaceable door gasket

TECHNICAL SPECIFICATIONS

	UCR140WH	UCF140WH
Controller:	Digital controller with temperature display	
Cooling:	Fan assisted	Static
Defrost:	Automatic	Manual
Refrigerant:	R600a	R600a
Climate Class:	4	4
Temperature Range:	+2°C ~ +8°C	-16°C ~ -24°C
Power Supply:	13amp	13amp

MODEL	GROSS CAPACITY	EXT. DIMENSIONS (H x W x D mm)	ENERGY RATING	POWER CONSUMPTION	KWH /ANNUM	DECIBELS	WEIGHT (kg)
UCR140WH	145L	819 x 598 x 648*	A	135W	390	53dBA	38
UCF140WH	115L	819 x 598 x 648*	-	135W	-	53dBA	41
M4-UCRSTACK	-	-	-	-	-	-	-

* Depth 598mm without handle

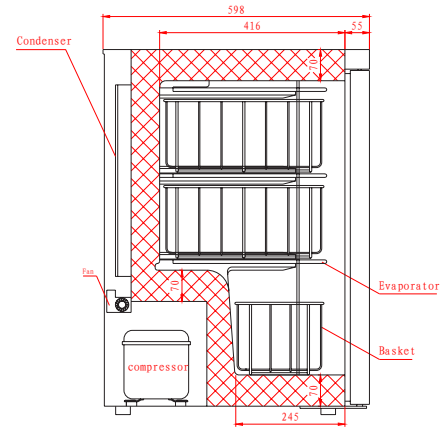
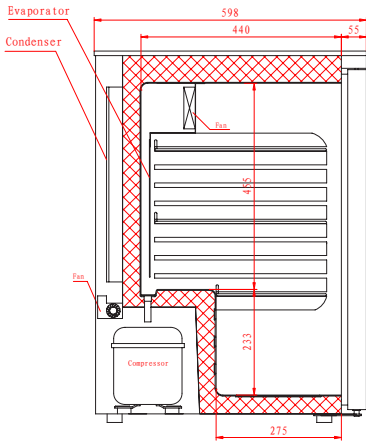


Under Counter Refrigeration

UCR140



UCF140



FEATURES

- High grade 304 stainless steel exterior
- ABS interior
- Height adjustable from 819 – 850mm
- Reversible door
- Lock fitted as standard
- UCR140 - adjustable shelves
- UCF140 - fixed shelves with baskets
- Replaceable door gasket

TECHNICAL SPECIFICATIONS

	UCR140	UCF140
Controller:	Digital controller with temperature display	
Cooling:	Fan assisted	Static
Defrost:	Automatic	Manual
Refrigerant:	R600a	R600a
Climate Class:	4	4
Temperature Range:	+2°C ~ +8°C	-16°C ~ -24°C
Power Supply:	13amp	13amp

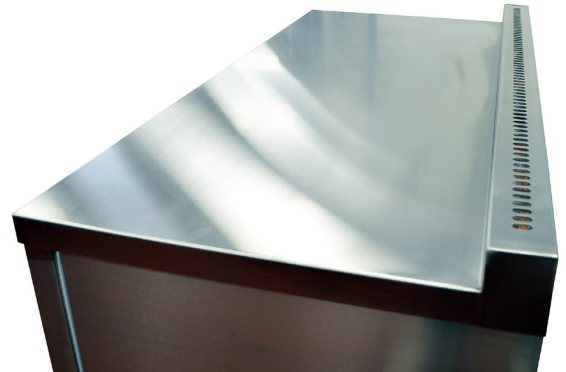
MODEL	GROSS CAPACITY	EXT. DIMENSIONS (H x W x D mm)	ENERGY RATING	POWER CONSUMPTION	KWH /ANNUM	DECIBELS	WEIGHT (kg)
UCR140	145L	819 x 598 x 598	A	135W	390	53dBA	38
UCF140	115L	819 x 598 x 598	-	135W	-	53dBA	41
M4-UCRSTACK	-	-	-	-	-	-	-



Refrigerated Workstation



Stainless steel worktop with upstand



Castors fitted as standard for easy movement



FEATURES

- High grade 304 stainless steel exterior
- ABS interior
- Stainless steel worktop with 50mm upstand
- Lock fitted as standard
- UCR140 - adjustable shelves
UCF140 - fixed shelves with baskets
- Replaceable door gasket
- Castors fitted as standard for easy movement

TECHNICAL SPECIFICATIONS

	UCR140	UCF140
Controller:	Digital controller with temperature display	
Cooling:	Fan assisted	Static
Defrost:	Automatic	Manual
Refrigerant:	R600a	R600a
Climate Class:	4	4
Temperature Range:	+2°C ~ +8°C	-16°C ~ -24°C
Power Supply:	13amp	13amp

MODEL	DESCRIPTION	GROSS CAPACITY	EXT. DIMENSIONS (H x W x D mm)	POWER CONSUMPTION	DECIBELS	WEIGHT (kg)
UCFR280	Freezer (L) + Fridge (R)*	115L + 145L	926 x 1200 x 607	135W + 135W	53dBA	99
UCRR280	Fridge + Fridge	145L + 145L	926 x 1200 x 607	135W + 135W	53dBA	96
UCFF280	Freezer + Freezer	115L + 115L	926 x 1200 x 607	135W + 135W	53dBA	102

* can be opposite configuration please state on order

MODEL	ENERGY RATING	KWH/ANNUM
UCR140	A	390



Refrigerators and Freezers



FEATURES

White laminated (W) or stainless steel exterior (S)

White ABS interior

Reversible door

Lock fitted as standard

Refrigerator - 4 adjustable shelves

Freezer - 5 fixed shelves

Rollers to rear, adjustable feet to the front

TECHNICAL SPECIFICATIONS

	Refrigerator	Freezer
Controller:	Dixell controller	
Cooling:	Fan Assisted	Static
Defrost:	Automatic	Manual
Climate Class:	4	4
Temperature Range:	+2°C ~ +10°C	-10°C ~ -20°C
Power Supply:	13amp	13amp

MODEL	TEMPERATURE RANGE	GROSS CAPACITY	EXT. DIMENSIONS (H x W x D mm)	ENERGY RATING	POWER CONSUMPTION	KWH /ANNUM	WEIGHT (kg)
HW40	+2°C ~ +10°C	305L	1850 x 595 x 640	B	127W	323	78
HS40	+2°C ~ +10°C	305L	1850 x 595 x 640	B	127W	323	78
LW40	-10°C ~ -20°C	326L	1850 x 595 x 640	B	210W	795	79
LS40	-10°C ~ -20°C	326L	1850 x 595 x 640	B	210W	795	79
HW60	+2°C ~ +10°C	533L	1850 x 775 x 750	C	160W	486	99
HS60	+2°C ~ +10°C	533L	1850 x 775 x 750	C	160W	486	99
LW60	-10°C ~ -20°C	550L	1850 x 775 x 750	B	220W	895	103
LS60	-10°C ~ -20°C	550L	1850 x 775 x 750	B	220W	895	103

OPTIONAL EXTRAS

M3-CASTORKIT2



Glass Door Refrigerators



FEATURES

- Double glazed glass door
- Stainless steel exterior (S)
- White ABS interior
- Reversible door
- Lock fitted as standard
- 4 adjustable shelves
- Rollers to rear, adjustable feet to the front

TECHNICAL SPECIFICATIONS

Controller:	Dixell controller
Cooling:	Fan Assisted
Defrost:	Automatic
Climate Class:	4
Temperature Range:	+2°C ~ +10°C
Power Supply:	13amp

MODEL	TEMPERATURE RANGE	GROSS CAPACITY	EXT. DIMENSIONS (H x W x D mm)	ENERGY RATING	POWER CONSUMPTION	KWH /ANNUM	DECIBELS	WEIGHT (kg)
HSG40	+2°C ~ +10°C	305L	1850 x 595 x 640	D	127W	323	-	78
HSG60	+2°C ~ +10°C	533L	1850 x 775 x 750	D	160W	486	-	99



Ventilated Gastronorm Refrigeration

2/1 Gastronorm Capacity

BR1SS

BF2SS



BR models - suitable for fresh meat storage



FEATURES

- High grade 304 stainless steel exterior & interior
- Internal corners rounded to aid cleaning
- 4 adjustable GN2/1 shelves per door, shelf size 535 x 650 mm
- Self closing door(s) with dwell position
- Single door models have reversible door
- 60 mm thick insulation
- LED lighting
- Suitable for fresh meat storage (BR range)
- Lock fitted as standard
- Heavy duty castors as standard
- Replaceable door gasket

TECHNICAL SPECIFICATIONS

	BR models	BF models
Cooling:	Ventilated	
Controller:	Dixell controller	
Defrost:	Automatic	
Refrigerant:	R290	R290
Climate Class:	4	
Temperature Range:	-2°C ~ +8°C	-18°C ~ -22°C
Power Supply:	13amp	

MODEL	DOOR	GROSS CAPACITY	EXT. DIMENSIONS (H x W x D mm)	ENERGY RATING	POWER CONSUMPTION	KWH /ANNUM	DECIBELS	WEIGHT (kg)
BR1SS	1	650L	2010 x 740 x 840	C	215W	554	60dBA	136
BF1SS	1	650L	2010 x 740 x 840	D	480W	2278	60dBA	141
BR2SS	2	1300L	2010 x 1480 x 840	D	440W	1376	60dBA	213
BF2SS	2	1300L	2010 x 1480 x 840	D	780W	4030	60dBA	226



Compact Gastronorm Counters

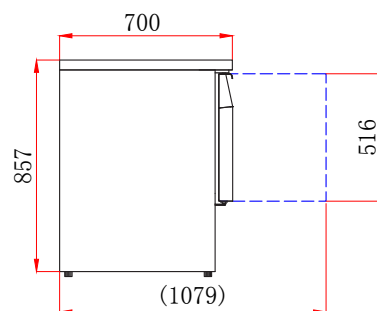
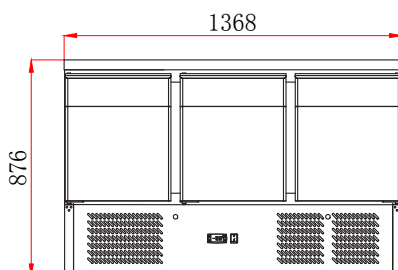
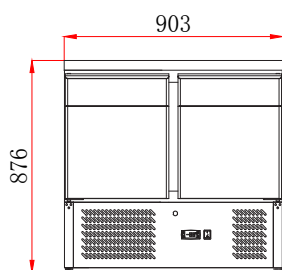
700mm Depth



BCC2



BCC3



FEATURES

- High grade AISI 304 stainless steel exterior & interior
- Internal corners rounded to aid cleaning
- 1 x adjustable GN1/1 shelf per door
- Adjustable feet
- Replaceable door gasket
- 35mm insulation
- Easily removable condenser filter for cleaning

TECHNICAL SPECIFICATIONS

- Controller: Dixell controller
- Cooling: Fan assisted
- Defrost: Automatic
- Refrigerant: R600a (BCC2)
R290 (BCC3)
- Climate Class: 4
- Temperature Range: +2°C ~ +8°C
- Power Supply: 13amp

MODEL	DOOR	GROSS CAPACITY	EXT. DIMENSIONS (H x W x D mm)	ENERGY RATING	POWER CONSUMPTION	KWH /ANNUM	DECIBELS	WEIGHT (kg)
BCC2	2	240L	876 x 903 x 700	C	170W	991	42dBA	100
BCC3	3	368L	876 x 1368 x 700	D	240W	1432	42dBA	132

OPTIONAL EXTRA (castor kit raises the height by 120mm)

Castors for 2DR model	X1-CASTORKIT2
Castors for 3DR model	X1-CASTORKIT3



See page 5 for full GN container range

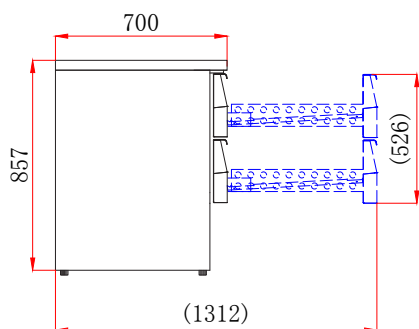
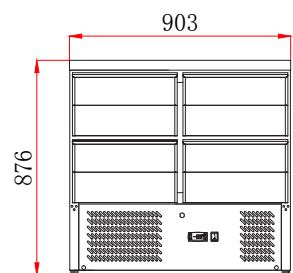
Compact Gastronorm Counters

700mm Depth With drawers

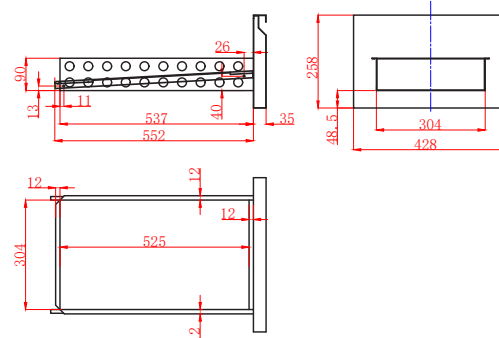
BCC2-4D



BCC3-6D



Drawer size



FEATURES

- High grade AISI 304 stainless steel exterior & interior
- Internal corners rounded to aid cleaning
- Drawers accept GN1/1 containers
- Adjustable feet
- 35mm insulation
- Easily removable condenser filter for cleaning

TECHNICAL SPECIFICATIONS

Controller:	Dixell controller
Cooling:	Fan assisted
Defrost:	Automatic
Refrigerant:	R600a (BCC2-4D) R290 (BCC3-6D)
Climate Class:	4
Temperature Range:	+2°C ~ +8°C
Decibels:	42dBA
Power Supply:	13amp

MODEL	DRAWER	GROSS CAPACITY	EXT. DIMENSIONS (H x W x D mm)	ENERGY RATING	POWER CONSUMPTION	KWH /ANNUM	WEIGHT (kg)
BCC2-4D	4	240L	876 x 903 x 700	C	170W	991	114
BCC3-6D	6	368L	876 x 1368 x 700	D	240W	1432	140

OPTIONAL EXTRA (castor kit raises the height by 120mm)

Castors for 2DR model	X1-CASTORKIT2
Castors for 3DR model	X1-CASTORKIT3



See page 5 for full GN container range

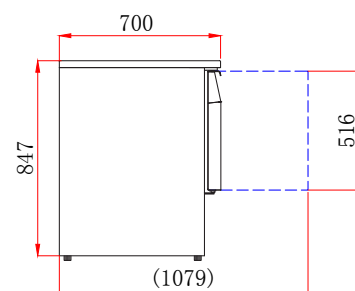
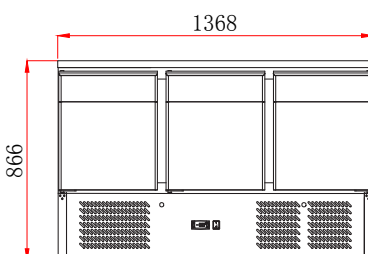
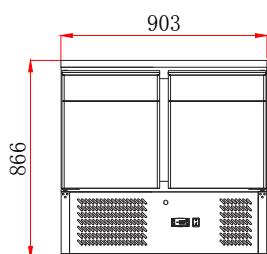
Compact Gastronorm Counters with Granite Worktop

700mm Depth

BCC2-GR-TOP



BCC3-GR-TOP



FEATURES

- High grade AISI 304 stainless steel exterior & interior
- Attractive granite worktop
- Internal corners rounded to aid cleaning
- Self closing doors
- 1 x adjustable GN1/1 shelf per door
- Adjustable feet
- Replaceable door gasket
- 35mm insulation
- Easily removable condenser filter for cleaning

TECHNICAL SPECIFICATIONS

Controller:	Dixell controller
Cooling:	Fan assisted
Defrost:	Automatic
Refrigerant:	R600a (BCC2-GR-TOP) R290 (BCC3-GR-TOP)
Climate Class:	4
Temperature Range:	+2°C ~ +8°C
Decibels:	42dBA
Power Supply:	13amp

MODEL	DOOR	GROSS CAPACITY	EXT. DIMENSIONS (H x W x D mm)	ENERGY RATING	POWER CONSUMPTION	KWH /ANNUM	WEIGHT (kg)
BCC2-GR-TOP	2	240L	866 x 903 x 700	C	170W	991	136
BCC3-GR-TOP	3	368L	866 x 1368 x 700	D	240W	1432	155

OPTIONAL EXTRA (castor kit raises the height by 120mm)

Castors for 2DR model	X1-CASTORKIT2
Castors for 3DR model	X1-CASTORKIT3



See page 5 for full GN container range

Compact Gastronorm Prep Counters

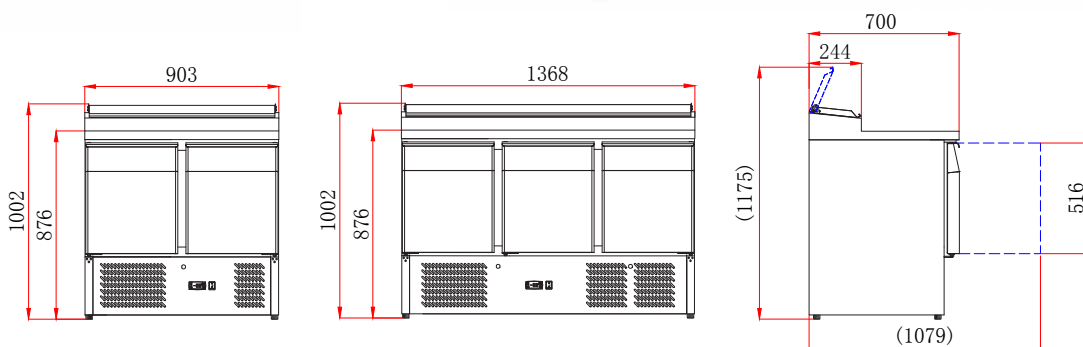
With Raised Collar

BCC2EN

BCC3EN

Product should be refrigerated prior to placing in raised collar

Working area depth 456mm



FEATURES

- High grade AISI 304 stainless steel exterior & interior
- Internal corners rounded to aid cleaning
- 1 x adjustable GN1/1 shelf per door
- Raised collar accepts GN1/6 containers - max depth 150mm (not supplied)
- Adjustable feet
- Replaceable door gasket
- 35mm insulation
- Easily removable condenser filter for cleaning

TECHNICAL SPECIFICATIONS

- Controller: Dixell controller
- Cooling: Fan assisted
- Defrost: Automatic
- Refrigerant: R600a (BCC2EN)
R290 (BCC3EN)
- Climate Class: 4
- Temperature Range: +2°C ~ +8°C
- Decibels: 42dBa
- Power Supply: 13amp

MODEL	DOOR	CONTAINER CAPACITY	GROSS CAPACITY	EXT. DIMENSIONS (H x W x D mm)	POWER CONSUMPTION	WEIGHT (kg)
BCC2EN	2	5 x GN1/6	254L	1002 x 903 x 700	170W	103
BCC3EN	3	8 x GN1/6	392L	1002 x 1368 x 700	240W	143

OPTIONAL EXTRA (castor kit raises the height by 120mm)

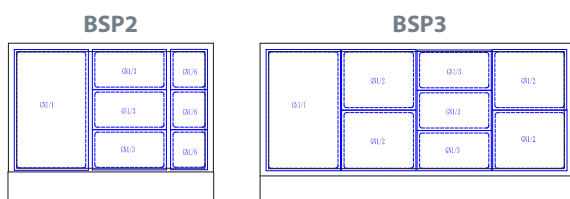
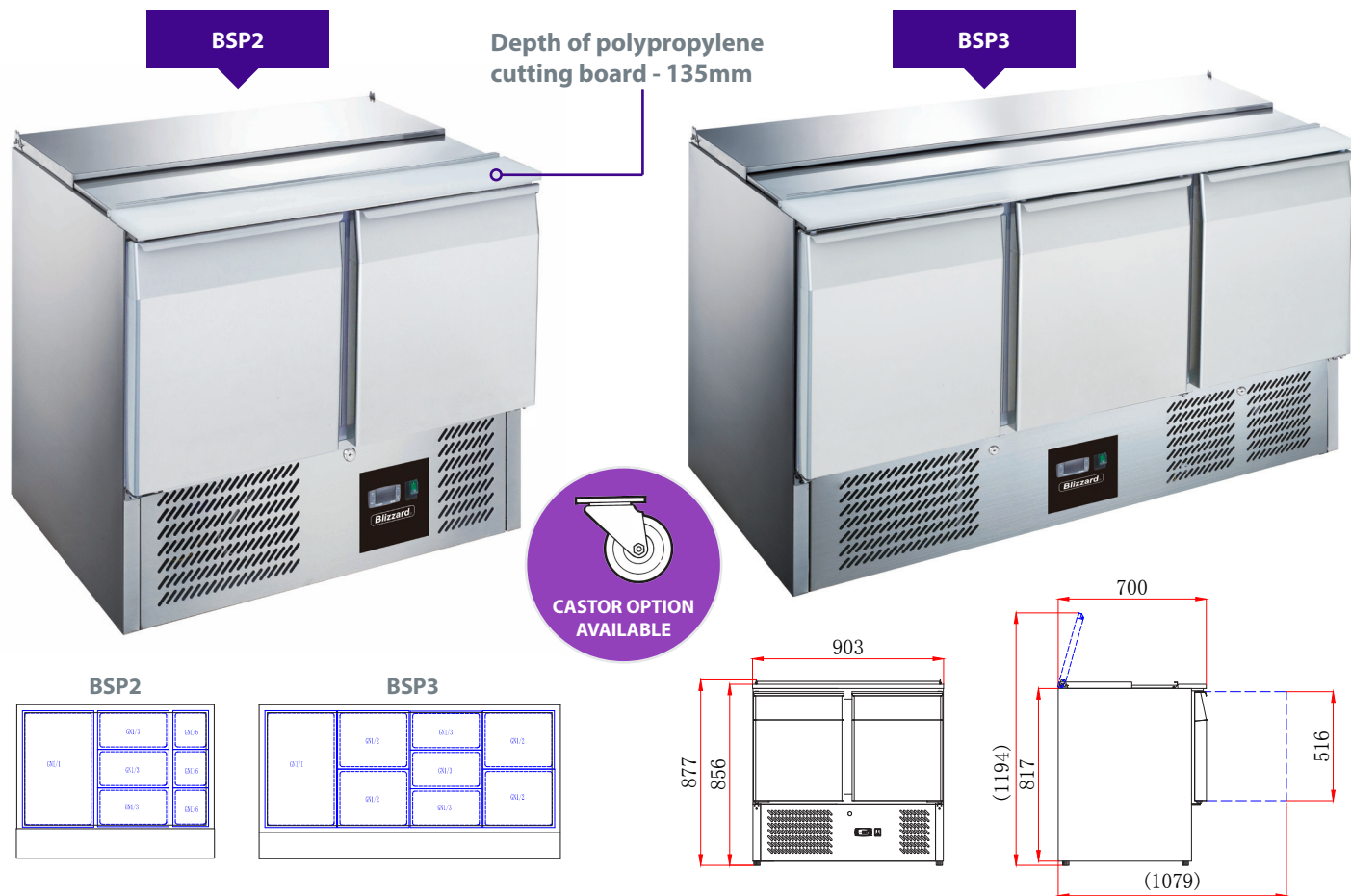
Castors for 2DR model	X1-CASTORKIT2
Castors for 3DR model	X1-CASTORKIT3



See page 5 for full GN container range

Compact Gastronorm Saladettes

With Cutting Board



FEATURES

- High grade AISI 304 stainless steel exterior & interior
- Internal corners rounded to aid cleaning
- Self closing doors
- 1 x adjustable GN1/1 shelf per door
- GN sized well accepts containers - max depth 150mm (containers are not included)
- Hinged lid over GN well
- 135mm deep polypropylene cutting board
- Adjustable feet
- Replaceable door gasket
- 35mm insulation
- Easily removable condenser filter for cleaning

TECHNICAL SPECIFICATIONS

- Controller: Dixell controller
- Cooling: Fan assisted
- Defrost: Automatic
- Refrigerant: R600a (BSP2)
R290 (BSP3)
- Climate Class: 4
- Temperature Range: +2°C ~ +8°C
- Decibels: 42dBA
- Power Supply: 13amp

MODEL	DOOR	CONTAINER CAPACITY	GROSS CAPACITY	EXT. DIMENSIONS (H x W x D mm)	POWER CONSUMPTION	WEIGHT (kg)
BSP2	2	2 x GN1/1 + 3 x GN1/6	240L	877 x 903 x 700	170W	94
BSP3	3	4 x GN1/1	368L	877 x 1368 x 700	240W	103



See page 5 for full GN container range

Compact Gastronorm Prep Stations

With Glass Display

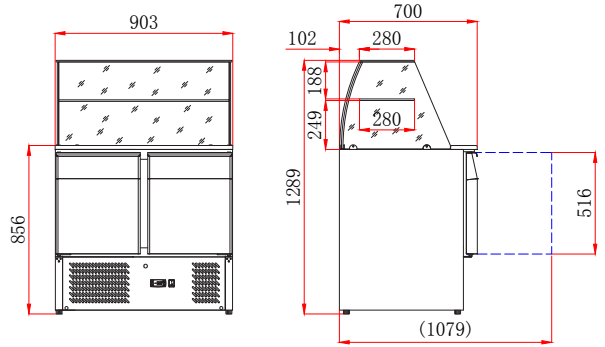
BPD2

Depth of polypropylene cutting board - 135mm

BPD3



Glass structure requires assembly on site.



FEATURES

- High grade AISI 304 stainless steel exterior & interior
- Internal corners rounded to aid cleaning
- Self closing doors
- 1 x adjustable GN1/1 shelf per door
- GN sized well accepts containers - max depth 150mm (containers are not included)
- Glass structure over containers with intermediate shelf to display non-refrigerated items
- 135mm deep polypropylene cutting board
- Adjustable feet
- Replaceable door gasket
- 35mm insulation
- Easily removable condenser filter for cleaning

TECHNICAL SPECIFICATIONS

- Controller: Dixell controller
- Cooling: Fan assisted
- Defrost: Automatic
- Refrigerant: R600a (BPD2)
R290 (BPD3)
- Climate Class: 4
- Temperature Range: +2°C ~ +8°C
- Decibels: 42dBA
- Power Supply: 13amp

MODEL	DOOR	CONTAINER CAPACITY	GROSS CAPACITY	EXT. DIMENSIONS (H x W x D mm)	POWER CONSUMPTION	WEIGHT (kg)
BPD2	2	2 x GN1/1 + 3 x GN1/6	240L	1289 x 903 x 700	170W	123
BPD3	3	4 x GN1/1	368L	1289 x 1368 x 700	240W	164



See page 5 for full GN container range

Compact Gastronorm Pizza Prep Counters

With Granite Worktop

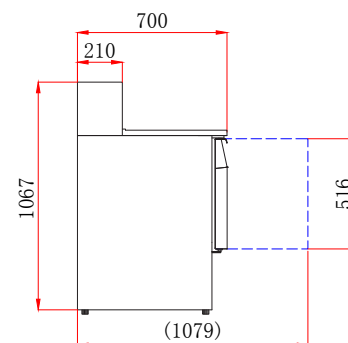
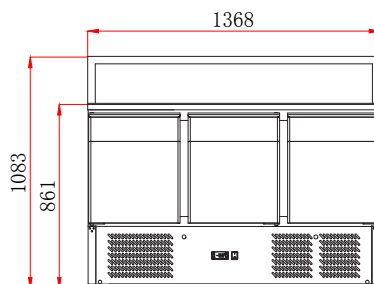
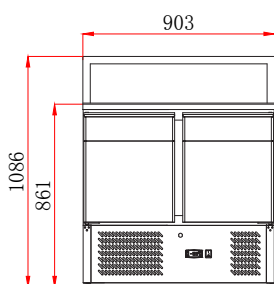
BCC2PREPGRANITE



BCC3PREPGRANITE



Granite work top depth 490mm



FEATURES

- Granite worktop
- High grade AISI 304 stainless steel exterior & interior
- Internal corners rounded for easy cleaning
- 1 x adjustable GN1/1 shelf per door
- Accepts GN1/6 containers - max depth 150mm (not supplied)
- Adjustable feet
- Replaceable door gasket
- 35mm insulation
- Easily removable condenser filter for cleaning

TECHNICAL SPECIFICATIONS

Controller:	Dixell controller
Cooling:	Fan assisted
Defrost:	Automatic
Refrigerant:	R600a (BCC2PREPGRANITE) R290 (BCC3PREPGRANITE)
Climate Class:	4
Temperature Range:	+2°C ~ +8°C
Decibels:	42dBA
Power Supply:	13amp

MODEL	DOOR	CONTAINER CAPACITY	GROSS CAPACITY	EXT. DIMENSIONS (H x W x D mm)	POWER CONSUMPTION	WEIGHT (kg)
BCC2PREPGRANITE	2	5 x GN1/6	240L	1086 x 903 x 700	170W	132
BCC3PREPGRANITE	3	8 x GN1/6	368L	1086 x 1368 x 700	240W	182



See page 5 for full GN container range

Slim-line Stainless Steel Counters

600mm Depth

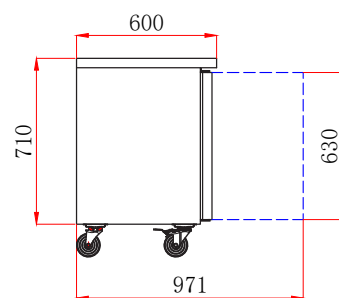
HBC2SL



LBC3SL



HBC4SL



FEATURES

- Stainless steel exterior & interior
- Even air distribution by ducted system
- 1x adjustable shelf per door (size - 330 x 430 mm)
- Heavy duty castors as standard
- Internal corners rounded for easy cleaning
- Self closing doors with dwell position
- Replaceable door gasket

TECHNICAL SPECIFICATIONS

	HBC models	LBC models
Controller:	Dixell controller	
Cooling:	Ventilated	
Defrost:	Automatic	
Refrigerant:	R290	
Climate Class:	4	
Temperature Range:	+2°C ~ +8°C	-18°C ~ -22°C
Power Supply:	13amp	

MODEL	GROSS CAPACITY	EXT. DIMENSIONS (H x W x D mm)	ENERGY RATING	POWER CONSUMPTION	KWH /ANNUM	DECIBELS	WEIGHT (kg)
HBC2SL	228L	850 x 1360 x 600	C	220W	802	42dBA	109
HBC3SL	339L	850 x 1795 x 600	C	230W	1214	42dBA	130
HBC4SL	449L	850 x 2230 x 600	D	345W	1818	42dBA	160
LBC2SL	228L	850 x 1360 x 600	E	520W	2762	42dBA	109
LBC3SL	339L	850 x 1795 x 600	E	560W	3108	42dBA	129
LBC4SL	449L	850 x 2230 x 600	E	650W	3673	42dBA	245



Refrigerator 1/1 Gastronorm Counters

700mm Depth With Covered Upstand

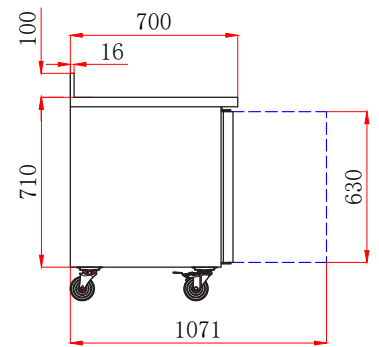
HBC2



HBC3



HBC4



FEATURES

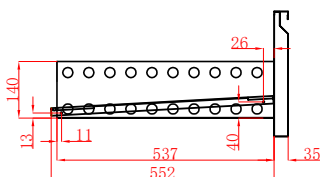
- Stainless steel exterior & interior
- Even air distribution by ducted system
- Available with 2 or 3 drawer option -
2 drawer option: GN container max. depth 150mm
3 drawer option: GN container max. depth 100mm
- Heavy duty castors as standard
- Coved 100mm upstand as standard
- Internal corners rounded for easy cleaning
- 1 x adjustable GN1/1 shelf per door
- Self closing doors with dwell position
- Replaceable door gasket

TECHNICAL SPECIFICATIONS

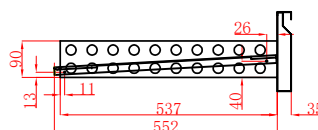
- Cooling: Ventilated
- Controller: Dixell controller
- Defrost: Automatic
- Refrigerant: R290
- Climate Class: 4
- Temperature Range: +2°C ~ +8°C
- Power Supply: 13amp

MODEL	GROSS CAPACITY	EXT. DIMENSIONS (H x W x D mm)	ENERGY RATING	POWER CONSUMPTION	KWH /ANNUM	DECIBELS	WEIGHT (kg)
HBC2	282L	950* x 1360 x 700	C	215W	822	42dBA	128
HBC3	417L	950* x 1795 x 700	C	230W	1162	42dBA	154
HBC4	553L	950* x 2230 x 700	D	345W	1741	42dBA	185
2 Drawer Pack							
3 Drawer Pack							

* includes 100mm upstand



2 drawer size



3 drawer size

Freezer 1/1 Gastronorm Counters

700mm Depth With Covered Upstand



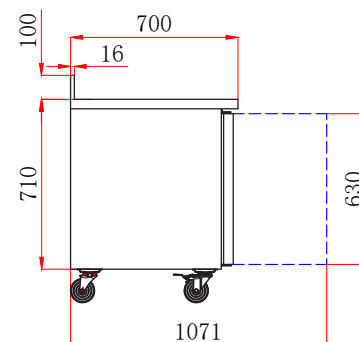
LBC2



LBC3



LBC4



FEATURES

- Stainless steel exterior & interior
- Even air distribution by ducted system
- Heavy duty castors as standard
- Coved 100mm upstand as standard
- Internal corners rounded for easy cleaning
- 1 x adjustable GN1/1 shelf per door
- Self closing doors with dwell position
- Replaceable door gasket

TECHNICAL SPECIFICATIONS

- Cooling: Ventilated
- Controller: Dixell controller
- Defrost: Automatic
- Refrigerant: R290
- Climate Class: 4
- Temperature Range: -18°C ~ -22°C
- Power Supply: 13amp

MODEL	GROSS CAPACITY	EXT. DIMENSIONS (H x W x D mm)	ENERGY RATING	POWER CONSUMPTION	KWH /ANNUM	DECIBELS	WEIGHT (kg)
LBC2	282L	950* x 1360 x 700	E	520W	2851	42dBA	133
LBC3	417L	950* x 1795 x 700	E	560W	3357	42dBA	179
LBC4	553L	950* x 2230 x 700	E	650W	3951	42dBA	196

* includes 100mm upstand



See page 5 for full GN container range

Refrigerator 1/1 Gastronorm Counters

700mm Depth, Without Upstand

HBC2NU

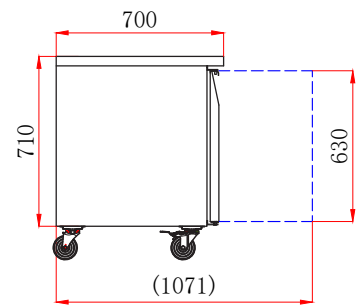
Image shown with 2 & 3 drawer options



HBC3NU



HBC4NU



FEATURES

- Stainless steel exterior & interior
- Even air distribution by ducted system
- Available with 2 or 3 drawer option -
2 drawer option: GN container max. depth 150mm
3 drawer option: GN container max. depth 100mm
- Heavy duty castors as standard
- Internal corners rounded for easy cleaning
- 1 x adjustable GN1/1 shelf per door
- Self closing doors with dwell position
- Replaceable door gasket

TECHNICAL SPECIFICATIONS

- Cooling: Ventilated
- Controller: Dixell controller
- Defrost: Automatic
- Refrigerant: R290
- Climate Class: 4
- Temperature Range: +2°C ~ +8°C
- Power Supply: 13amp

MODEL	GROSS CAPACITY	EXT. DIMENSIONS (H x W x D mm)	ENERGY RATING	POWER CONSUMPTION	KWH /ANNUM	DECIBELS	WEIGHT (kg)
HBC2NU	282L	850 x 1360 x 700	C	215W	822	42dBA	128
HBC3NU	417L	850 x 1795 x 700	C	230W	1162	42dBA	154
HBC4NU	553L	850 x 2230 x 700	D	345W	1741	42dBA	185
2 Drawer Pack							
3 Drawer Pack							



See page 5 for full GN container range

Freezer 1/1 Gastronorm Counters

700mm Depth, Without Upstand

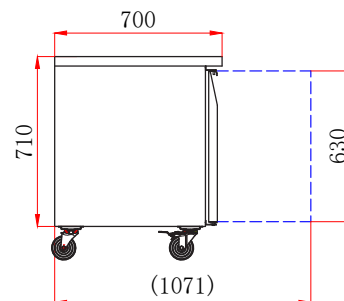
LBC2NU



LBC3NU



LBC4NU



FEATURES

- Stainless steel exterior & interior
- Even air distribution by ducted system
- Heavy duty castors as standard
- Internal corners rounded for easy cleaning
- 1 x adjustable GN1/1 shelf per door
- Self closing doors with dwell position
- Replaceable door gasket

TECHNICAL SPECIFICATIONS

- Cooling: Ventilated
- Controller: Dixell controller
- Defrost: Automatic
- Refrigerant: R290
- Climate Class: 4
- Temperature Range: -18°C ~ -22°C
- Power Supply: 13amp

MODEL	GROSS CAPACITY	EXT. DIMENSIONS (H x W x D mm)	ENERGY RATING	POWER CONSUMPTION	KWH /ANNUM	DECIBELS	WEIGHT (kg)
LBC2NU	282L	850 x 1360 x 700	E	520W	2851	42dBA	133
LBC3NU	417L	850 x 1795 x 700	E	560W	3357	42dBA	179
LBC4NU	553L	850 x 2230 x 700	E	650W	3951	42dBA	196



See page 5 for full GN container range

Refrigerated Glass Door 1/1 Gastronorm Counters

700mm Depth With Covered Upstand



FEATURES
Stainless steel exterior & interior
Even air distribution by ducted system
Anodised aluminium framed glass doors
Heavy duty castors as standard
Coved 100mm upstand as standard
Internal corners rounded for easy cleaning
1 x adjustable GN1/1 shelf per door
Replaceable door gasket

TECHNICAL SPECIFICATIONS	
Controller:	Dixell controller
Cooling:	Ventilated
Defrost:	Automatic
Refrigerant:	R290
Climate Class:	4
Temperature Range:	+2°C ~ +8°C
Decibels:	42dBA
Power Supply:	13amp

MODEL	DOOR	GROSS CAPACITY	EXT. DIMENSIONS (H x W x D mm)	ENERGY RATING	POWER CONSUMPTION	KWH /ANNUM	WEIGHT (kg)
HBC2CR	2	282L	950* x 1360 x 700	B	215W	820	128
HBC3CR	3	417L	950* x 1795 x 700	B	230W	1191	154
HBC4CR	4	553L	950* x 2230 x 700	C	345W	1886	185

* includes 100mm upstand



See page 5 for full GN container range

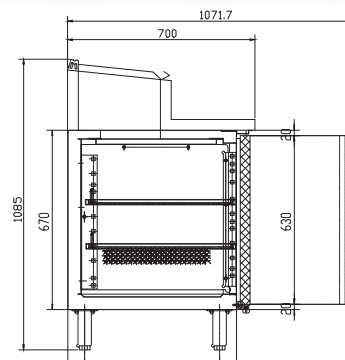
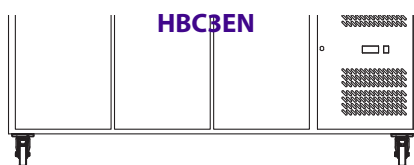
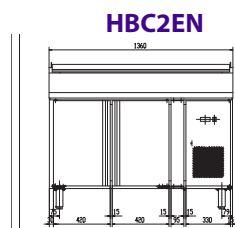
Refrigerated Prep Counters

With Raised Collar

Working area depth 300mm



Product should be refrigerated prior to placing in raised collar



FEATURES

- Stainless steel exterior & interior
- Even air distribution by ducted system
- Available with 2 or 3 drawer option
- Raised collar accepts GN1/3 containers – max depth 150mm (not supplied)
- Working area depth 300mm
- 1 x adjustable GN1/1 shelf per door
- Heavy duty castors as standard
- Self closing doors
- Replaceable door gasket

TECHNICAL SPECIFICATIONS

Controller:	Dixell controller
Cooling:	Ventilated
Defrost:	Automatic
Refrigerant:	R290
Climate Class:	4
Temperature Range:	+2°C ~ +8°C
Decibels:	42dBA
Power Supply:	13amp

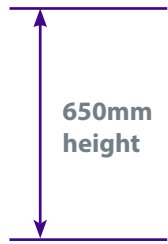
MODEL	DOOR	CONTAINER CAPACITY	GROSS CAPACITY	EXT. DIMENSIONS (H x W x D mm)	POWER CONSUMPTION	WEIGHT (kg)
HBC2EN	2	7 x GN1/3	282L	1075 x 1360 x 700	350W	120
HBC3EN	3	8 x GN1/3	417L	1075 x 1795 x 700	350W	146
2 Drawer Pack						
3 Drawer Pack						



See page 5 for full GN container range

Snack Counters

Low height 650mm to support grills, griddles and fryers etc



FEATURES

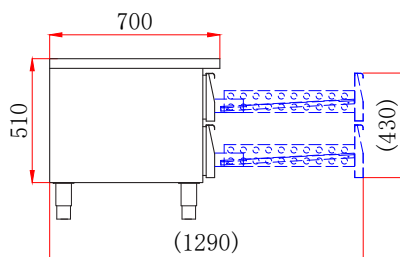
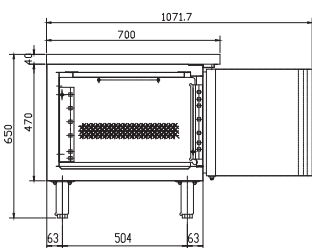
- Stainless steel exterior & interior
- Internal corners rounded for easy cleaning
- 1x adjustable GN1/1 shelf per door; Drawers accept GN1/1 trays
- Self closing doors with stay open facility
- Replaceable door gasket

TECHNICAL SPECIFICATIONS

- Controller: Dixell controller
- Cooling: Ventilated
- Defrost: Automatic
- Refrigerant: R290
- Climate Class: 4
- Temperature Range: +2°C ~ +8°C
- Power Supply: 13amp

MODEL	GROSS CAPACITY	EXT. DIMENSIONS (H x W x D mm)	ENERGY RATING	POWER CONSUMPTION	KWH /ANNUM	DECIBELS	WEIGHT (kg)
SNC2	214L	650 x 1360 x 700	C	215W	959	42dBA	104
SNC3	317L	650 x 1795 x 700	C	230W	1090	42dBA	126
SNC4	420L	650 x 2230 x 700	D	345W	1489	42dBA	155
SNC2-DRW	214L	650 x 1360 x 700	C	215W	959	48dBA	124
SNC3-DRW	317L	650 x 1795 x 700	C	230W	1090	48dBA	156
SNC4-DRW	420L	650 x 2230 x 700	D	345W	1489	48dBA	195

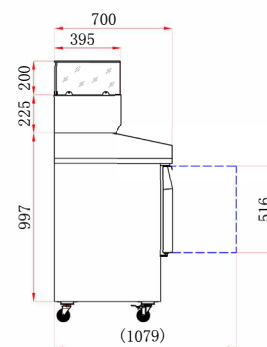
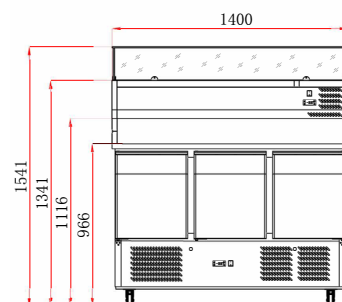
2 Drawer Pack



Compact Gastronorm Pizza Prep Counter

With Granite Worktop and Prep Top

BCC3PIZZA



FEATURES

High grade AISI 304 stainless steel exterior & interior

Granite work top with granite upstand to support refrigerated preparation top

Internal corners rounded for easy cleaning

1 x adjustable GN1/1 shelf per door

Refrigerated preparation top accepts 6 x GN1/4 containers - max depth 150mm (not supplied)

4 castors, front with brake

Replaceable door gasket

TECHNICAL SPECIFICATIONS

Controller: Dixell controller

Cooling: Fan assisted

Defrost: Automatic

Refrigerant: R290

Climate Class: 4

Temperature Range: +2°C ~ +8°C

Decibels: 42dBA

Power Supply: 2x 13amp

MODEL	GROSS CAPACITY	CONTAINER CAPACITY	EXT. DIMENSIONS (H x W x D mm)	ENERGY RATING	POWER CONSUMPTION	KWH /ANNUM	WEIGHT (kg)
BCC3PIZZA	368L	6 x GN1/4	1541 x 1400 x 700	D*	240W + 110W	1432	236

* Energy rating refers to base unit only.



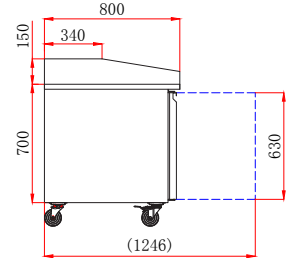
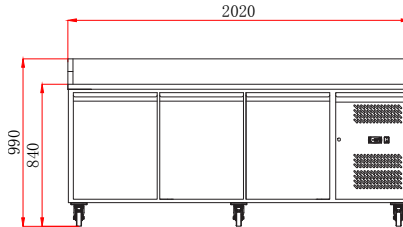
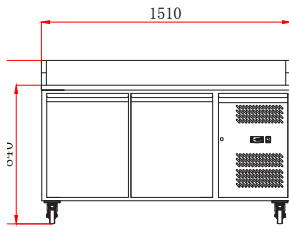
See page 5
for full GN
container range

Pizza Prep Counters

BPB1500



BPB2000



FEATURES

- High grade AISI 304 stainless steel exterior & interior - including exterior back

- White granite worktop

- Internal corners rounded for easy cleaning

- 15cm granite upstand

- 1 x adjustable shelf (408 x 630 mm) per door

- Self closing doors with stay open facility

- Heavy duty castors as standard

- Replaceable door gasket

TECHNICAL SPECIFICATIONS

- Controller: Dixell controller

- Cooling: Ventilated

- Defrost: Automatic

- Refrigerant: R290

- Climate Class: 4

- Temperature Range: +2°C ~ +8°C

- Decibels: 48dBA

- Power Supply: 13amp

MODEL	DOOR	GROSS CAPACITY	EXT. DIMENSIONS (H x W x D mm)	ENERGY RATING	POWER CONSUMPTION	KWH /ANNUM	WEIGHT (kg)
BPB1500	2	390L	990 x 1510 x 800	B	215W	785	280
BPB2000	3	580L	990 x 2020 x 800	C	320W	1352	360



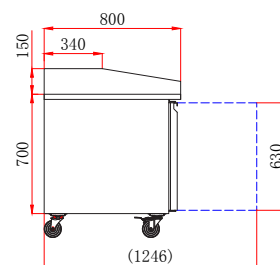
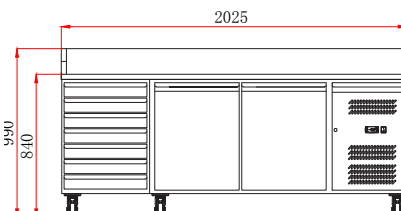
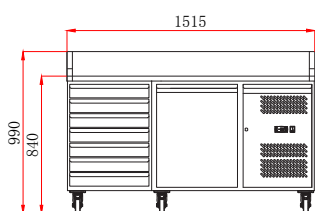
See page 5 for full GN container range

Pizza Prep Counters with Neutral Drawers

BPB1500-7N



BPB2000-7N



FEATURES

- High grade AISI 304 stainless steel exterior & interior - including exterior back
- White granite worktop
- Internal corners rounded for easy cleaning
- 15cm granite upstand
- 7 x neutral drawers for storage of pizza dough
- 1 x adjustable shelf (408 x 630 mm) per door
- Self closing door(s) with stay open facility
- Heavy duty castors as standard
- Replaceable door gasket

TECHNICAL SPECIFICATIONS

Controller:	Dixell controller
Cooling:	Ventilated
Defrost:	Automatic
Refrigerant:	R290
Climate Class:	4
Temperature Range:	+2°C ~ +8°C
Decibels:	42dBA
Power Supply:	13amp

MODEL	DOOR	GROSS CAPACITY	EXT. DIMENSIONS (H x W x D mm)	ENERGY RATING	POWER CONSUMPTION	KWH /ANNUM	WEIGHT (kg)
BPB1500-7N	1	390L	990 x 1515 x 800	A	215W	473	318
BPB2000-7N	2	580L	990 x 2025 x 800	B	215W	785	396

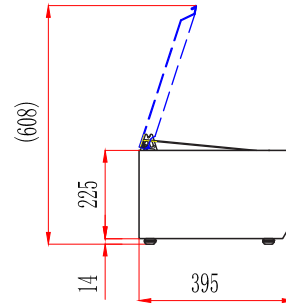


See page 5 for full GN container range

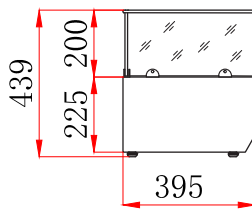
Pizza, Sandwich or Salad Preparation Units

1/3 Gastronorm

TOP1500EN



TOP1500CR



FEATURES

Stainless steel exterior & interior

Choice of glass structure (CR models) or hinged stainless steel lid (EN model)

Accepts GN1/3 containers up to 150mm deep (not supplied)

OPTIONAL EXTRAS

Wall bracket	T3-WALLBRKT2
--------------	--------------

TECHNICAL SPECIFICATIONS

Controller:	Dixell controller
Cooling:	Static
Defrost:	Manual
Refrigerant:	R600a
Climate Class:	4
Temperature Range:	+2°C ~ +8°C
Decibels:	46dBA
Power Consumption:	110W
Power Supply:	13amp

MODEL	CONTAINER CAPACITY	EXTERNAL DIMENSIONS (H x W x D mm)	INTERNAL DIMENSIONS (H x W x D mm)	WEIGHT (kg)
TOP1200EN	3 x GN1/3 + GN1/2	281 x 1200 x 395	165 x 850 x 311	60
TOP1500EN	5 x GN1/3 + GN1/2	281 x 1500 x 395	165 x 1150 x 311	72
TOP2000EN	9 x GN1/3	281 x 2000 x 395	165 x 1650 x 311	92
TOP1200CR	3 x GN1/3 + GN1/2	439 x 1200 x 395	165 x 850 x 311	60
TOP1500CR	5 x GN1/3 + GN1/2	439 x 1500 x 395	165 x 1150 x 311	72
TOP2000CR	9 x GN1/3	439 x 2000 x 395	165 x 1650 x 311	92

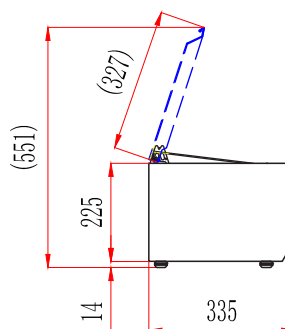


See page 5 for full GN container range

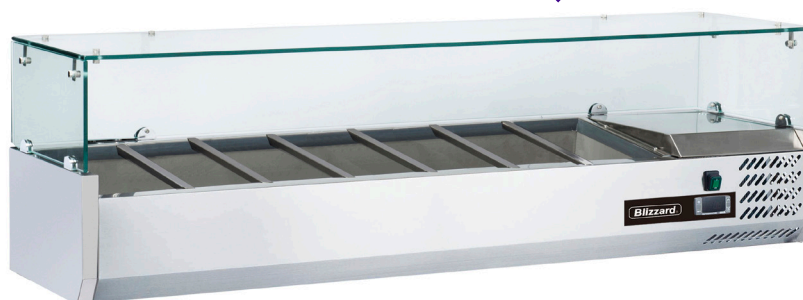
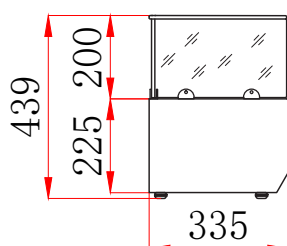
Pizza, Sandwich or Salad Preparation Units

1/4 Gastronorm

TOP1500-14EN



TOP1500-14CR



FEATURES

Stainless steel exterior & interior

Choice of glass structure (CR models) or hinged stainless steel lid (EN model)

Accepts GN1/4 containers up to 150mm deep (not supplied)

OPTIONAL EXTRAS

Wall bracket T3-WALLBRKT1

TECHNICAL SPECIFICATIONS

Controller:	Dixell controller
Cooling:	Static
Defrost:	Manual
Refrigerant:	R600a
Climate Class:	4
Temperature Range:	+2°C ~ +8°C
Decibels:	42dBA
Power Consumption:	110W
Power Supply:	13amp

MODEL	CONTAINER CAPACITY	EXTERNAL DIMENSIONS (H x W x D mm)	INTERNAL DIMENSIONS (H x W x D mm)	WEIGHT (kg)
TOP1200-14EN	5 x GN1/4	281 x 1200 x 335	165 x 850 x 251	55
TOP1500-14EN	7 x GN1/4	281 x 1500 x 335	165 x 1150 x 251	66
TOP2000-14EN	10 x GN1/4	281 x 2000 x 335	165 x 1650 x 251	85
TOP1200-14CR	5 x GN1/4	439 x 1200 x 335	165 x 850 x 251	55
TOP1500-14CR	7 x GN1/4	439 x 1500 x 335	165 x 1150 x 251	66
TOP2000-14CR	10 x GN1/4	439 x 2000 x 335	165 x 1650 x 251	85

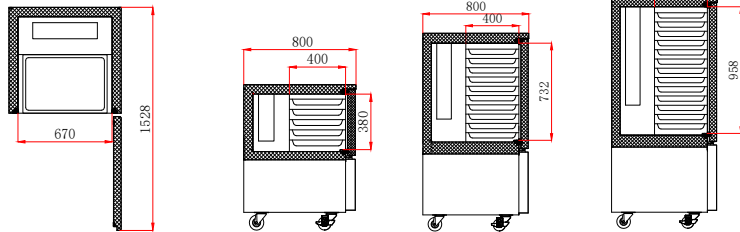


See page 5
for full GN
container range

Blast Chiller / Freezer



Operation
Guide
Video



FEATURES

- High grade 304 stainless steel exterior & interior
- Automatic vaporisation of condensate
- Temperature probe
- Accepts GN1/1 trays or 600 x 400mm shelves
- For optimal result, it's recommended to use 25mm deep gastronorm containers (not supplied)
- Heavy duty castors as standard
- Self closing door
- Right hand hinged door
- Replaceable door gasket

TECHNICAL SPECIFICATIONS

- Cycle Time: Blast chill cycle +70 to +3°C in 90 minutes
Blast freeze cycle +70 to -18°C in 240 minutes
- Controller: Digital controller with temperature display
- Cooling: Ventilated
- Defrost: Automatic
- Refrigerant: R290
- Climate Class: 4
- Temperature Range: +70°C ~ -18°C
- Power Supply: 13amp

MODEL	CHILL CYCLE (90 mins)	FREEZE CYCLE (240 mins)	CONTAINER CA- PACITY	EXT. DIMENSIONS (H x W x D mm)	POWER CONSUMPTION	WEIGHT (kg)
BCF20-HC	20 kg	15 kg	5 x GN1/1	1000 x 800 x 800	750W	116
BCF40-HC	40 kg	28 kg	10 x GN1/1	1520 x 800 x 800	980W	139
BCF60-HC	60 kg	38 kg	13 x GN1/1	1780 x 800 x 800	1200W	182



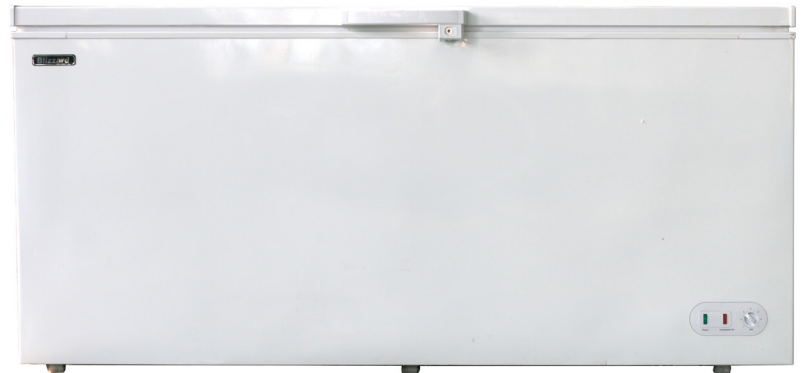
See page 5
for full GN
container range

Commercial Chest Freezer

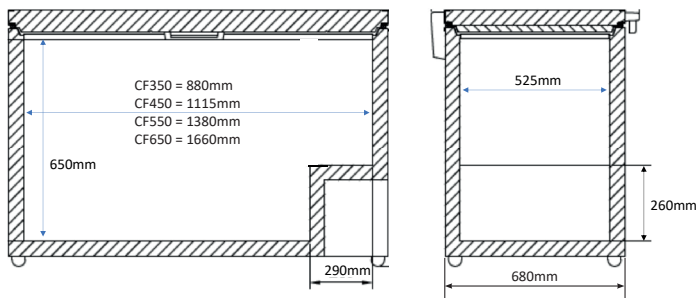
CF450WH



CF650WH



CF550WH



FEATURES

White laminated exterior including lid

Stippled aluminium interior

Roll bond maintenance free condenser

Lock fitted as standard

Rollers fitted as standard

Replaceable door gasket

TECHNICAL SPECIFICATIONS

Controller: Manual thermostat

Cooling: Static

Defrost: Manual

Refrigerant: R600a

Climate Class: 4

Temperature Range: -18°C ~ -22°C

Decibels: 48dBA

Power Supply: 13amp

MODEL	GROSS CAPACITY	BASKETS SUPPLIED	MAX. BASKETS	EXT. DIMENSIONS (H x W x D mm)	ENERGY RATING	POWER CONSUMPTION	KWH /ANNUM	WEIGHT (kg)
CF350WH	350L	1	3	840 x 1030 x 755	F	64W	268	57.5
CF450WH	450L	1	4	840 x 1270 x 755	F	138W	302	65.5
CF550WH	550L	2	5	840 x 1530 x 755	F	161W	323	75
CF650WH	650L	2	6	840 x 1810 x 755	F	161W	382	83.5

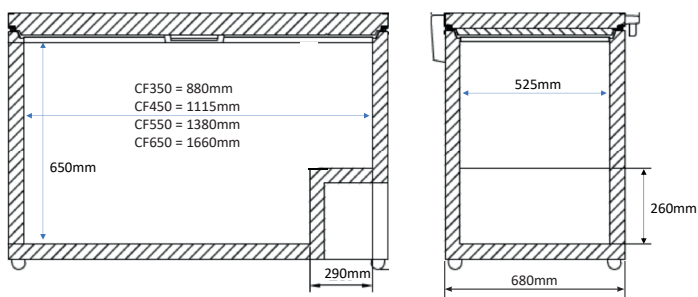


Stainless Steel Lid Chest Freezer

CF650SS



CF450SS



FEATURES

- White laminated exterior; stippled aluminium interior
- High grade 304 stainless steel lid with plastic capped ends, can be used as a work surface
- Roll bond maintenance free condenser
- Lock fitted as standard
- Rollers fitted as standard
- Replaceable door gasket

TECHNICAL SPECIFICATIONS

Controller:	Manual thermostat
Cooling:	Static
Defrost:	Manual
Refrigerant:	R600a
Climate Class:	4
Temperature Range:	-18°C ~ -22°C
Decibels:	48dBA
Power Supply:	13amp

MODEL	GROSS CAPACITY	BASKETS SUPPLIED	MAX. BASKETS	EXT. DIMENSIONS (H x W x D mm)	ENERGY RATING	POWER CONSUMPTION	KWH /ANNUM	WEIGHT (kg)
CF450SS	450L	1	4	840 x 1270 x 755	F	138W	302	65.5
CF550SS	550L	2	5	840 x 1530 x 755	F	161W	323	75
CF650SS	650L	2	6	840 x 1810 x 755	F	161W	382	83.5





DISPLAY REFRIGERATION

Upright Display Refrigerators & Freezers | Upright Patisserie Display
Counter Top Display | Serve Over Display | Grab & Go | Multidecks
Buffet Display | Display Chest Freezers

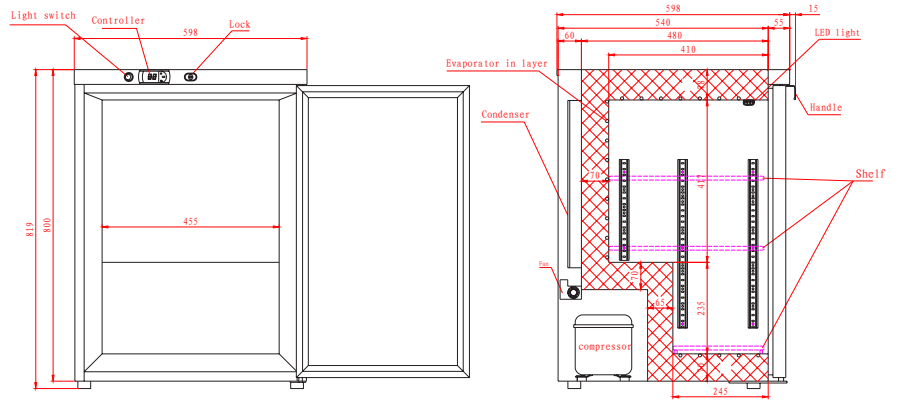
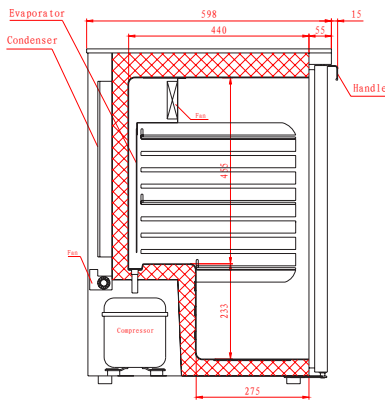
From multidecks to patisserie displays and serve overs to chest freezers it has never been so important to show off your products effectively to your customer and with our wide range of options from the world's leading brands in refrigeration you're sure to find the perfect solution to your refrigeration needs.

Glass Door Under Counter Refrigeration

UCR140CR



UCF140CR



FEATURES

High grade 304 stainless steel exterior

UCR140CR - ABS interior

UCF140CR - White laminated interior

Height adjustable from 819 – 850mm

Lock fitted as standard

Adjustable shelves

Replaceable door gasket

TECHNICAL SPECIFICATIONS

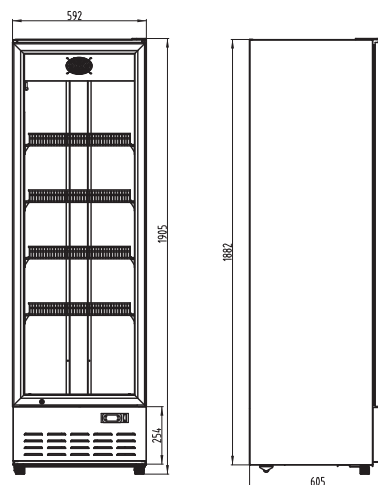
	UCR140CR	UCF140CR
Controller:	Digital controller with temperature display	
Cooling:	Fan assisted	Static
Defrost:	Automatic	Manual
Refrigerant:	R600a	R600a
Climate Class:	3	3
Temperature Range:	+2°C ~ +8°C	-16°C ~ -24°C
Power Supply:	13amp	13amp

MODEL	GROSS CAPACITY	EXT. DIMENSIONS (H x W x D mm)	ENERGY RATING	POWER CONSUMPTION	KWH /ANNUM	DECIBELS	WEIGHT (kg)
UCR140CR	145L	819 x 598 x 613	B	135W	431	53dBA	44
UCF140CR	105L	819 x 598 x 613	-	135W	-	53dBA	47
M4-UCRSTACK	-	-	-	-	-	-	-



Glass Door Merchandiser

BC350



FEATURES

- White laminated exterior with black plastic door frame
- White prepainted aluminium interior
- 5 adjustable shelves, shelf size 485 x 420 mm
- Internal LED illumination
- Double glazed door
- Lock fitted as standard
- Feet as standard
- Replaceable door gasket

TECHNICAL SPECIFICATIONS

- Controller: Digital controller with temperature display
- Cooling: Ventilated
- Defrost: Automatic
- Refrigerant: R600a
- Climate Class: 4
- Temperature Range: +2°C ~ +8°C
- Power Supply: 13amp

MODEL	GROSS CAPACITY	EXT. DIMENSIONS (H x W x D mm)	ENERGY RATING	POWER CONSUMPTION	KWH /ANNUM	DECIBELS	WEIGHT (kg)
BC350	350L	1905 x 592 x 605	B	210W	1161	44dBA	84



Glass Door Merchandisers

GD350



Panel size: 555 x 190 mm

GD630



Panel size: 885 x 190 mm

GD900SL



Panel size: 1255 x 190 mm

FEATURES

White laminated exterior with black plastic door frame

White prepainted aluminium interior

Illuminated top panel; graphics can be customised (P.O.A)

4 adjustable shelves per door

Internal LED illumination

Self-closing double glazed door

Hinged door models - lock fitted as standard

Single door models - feet as standard

Double door models - castors as standard

Replaceable door gasket

TECHNICAL SPECIFICATIONS

Controller: Digital controller with temperature display

Cooling: Ventilated

Defrost: Automatic

Refrigerant: Single door models - R600a
Double door models - R290

Climate Class: 4

Temperature Range: +2°C ~ +8°C

Power Supply: 13amp

MODEL	DOOR	GROSS CAPACITY	EXT. DIMENSIONS (H x W x D mm)	ENERGY RATING	POWER CONSUMPTION	KWH /ANNUM	DECIBELS	WEIGHT (kg)
GD350	1	350L	2180 x 592 x 615	B	210W	1161	44dBA	84
GD630	2	630L	2010 x 925 x 695	C	300W	1874	52dBA	124
GD630SL	2 (sliding)	630L	2010 x 925 x 695	C	300W	1874	52dBA	124
GD900	2	908L	2010 x 1295 x 695	C	350W	2435	52dBA	151
GD900SL	2 (sliding)	908L	2010 x 1295 x 695	C	350W	2435	52dBA	151



Ventilated Gastronorm Glass Door Refrigeration

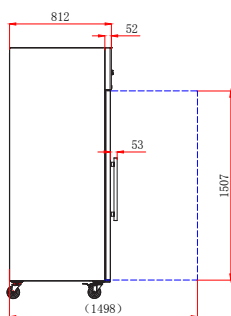
2/1 Gastronorm Capacity

BR1SSCR

BF2SSCR



BR models - suitable for fresh meat storage



FEATURES

- High grade 304 stainless steel exterior & interior
- Internal corners rounded to aid cleaning
- 4 adjustable GN2/1 shelves per door, shelf size 535 x 650 mm
- Double glazed door
- Self closing door(s) with dwell position
- Single door models have reversible door
- LED lighting
- Suitable for fresh meat storage (BR range)
- Lock fitted as standard
- Heavy duty castors as standard
- Replaceable door gasket

TECHNICAL SPECIFICATIONS

- Controller: Dixell controller
- Cooling: Ventilated
- Defrost: Automatic
- Refrigerant: R290
- Climate Class: 3
- Decibels: 60dBA
- Power Supply: 13amp

MODEL	DOOR	TEMPERATURE RANGE	GROSS CAPACITY	EXT. DIMENSIONS (H x W x D mm)	ENERGY RATING	POWER CONSUMPTION	KWH /ANNUM	WEIGHT (kg)
BR1SSCR	1	-2°C ~ +8°C	650L	2010 x 740 x 858	B	215W	755	136
BF1SSCR	1	-15°C ~ -18°C	650L	2010 x 740 x 858	D	480W	3223	141
BR2SSCR	2	-2°C ~ +8°C	1300L	2010 x 1480 x 858	B	440W	1710	213
BF2SSCR	2	-15°C ~ -18°C	1300L	2010 x 1480 x 858	D	780W	5520	226



Cake Display

Round case



CD100R

CD400R

FEATURES

Stainless steel body base

Brilliant Internal LED lighting at 2 sides

CD100R - 3 adjustable glass shelves

CD400R - 4 adjustable glass shelves

Shelf rotatable manually

Double tempered glass

CD400R on small castors

TECHNICAL SPECIFICATIONS

Controller: Digital controller with temperature display

Cooling: Ventilated

Defrost: Automatic

Refrigerant: R600a

Climate Class: 4

Temperature Range: +2°C ~ +8°C

Power Supply: 13amp

MODEL	GROSS CAPACITY	EXT. DIMENSIONS (H x W x D mm)	ENERGY RATING	POWER CONSUMPTION	KWH /ANNUM	DECIBELS	WEIGHT (kg)
CD100R	100L	1030 x 480 x 480	C	230W	1376	55dBA	55
CD400R	360L	1750 x 680 x 680	C	480W	2484	55dBA	140



Cake Display

Square case

CD270L



CD400L



FEATURES

- Stainless steel body base
- Brilliant Internal LED lighting on sides
- CD270L - 2 adjustable chrome plated shelves
CD400L - 3 adjustable chrome plated shelves
- Front flat glass door
- 4 sides triple glazed glass
- 4 castors, 2 with brakes
- On / Off Switch

TECHNICAL SPECIFICATIONS

Controller:	Digital controller with temperature display
Cooling:	Ventilated
Defrost:	Automatic
Refrigerant:	R290
Climate Class:	4
Temperature Range:	0°C ~ +10°C
Power Supply:	13amp

MODEL	GROSS CAPACITY	EXT. DIMENSIONS (H x W x D mm)	ENERGY RATING	POWER CONSUMPTION	KWH /ANNUM	DECIBELS	WEIGHT (kg)
CD270L	270L	1500 x 650 x 650	C	475W	1598	55dBA	165
CD400L	400L	1908 x 650 x 650	C	495W	2002	55dBA	205

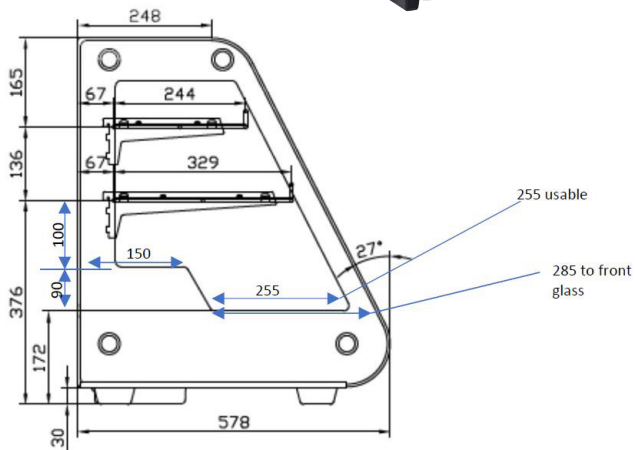


Counter Top Merchandisers

COLDT1



COLDT2



FEATURES

- Stainless steel construction
- Rear sliding doors, easily removable for cleaning
- 2 adjustable chrome plated shelves
- LED illumination with on/off switch

TECHNICAL SPECIFICATIONS

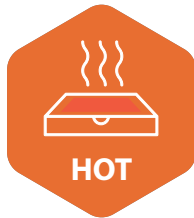
Controller:	Digital controller with temperature display on service side
Defrost:	Automatic
Refrigerant:	R600a
Climate Class:	4
Temperature Range:	+2°C ~ +12°C
Power Supply:	13amp

MODEL	GROSS CAPACITY	EXT. DIMENSIONS (H x W x D mm)	ENERGY RATING	POWER CONSUMPTION	KWH /ANNUM	DECIBELS	WEIGHT (kg)
COLDT1	130L	677 x 697 x 578	C	180W	1490	45dBA	57
COLDT2	160L	677 x 875 x 578	C	180W	1473	45dBA	65

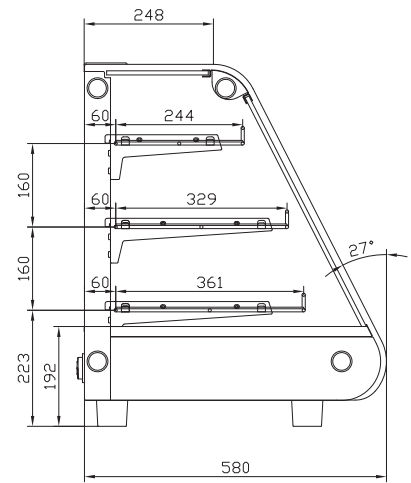


Counter Top Heated Merchandisers

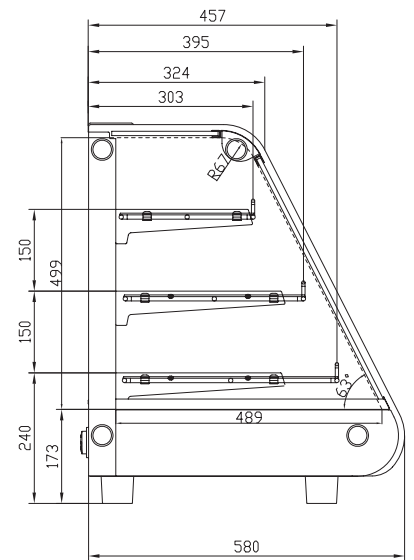
HOTT1



HOTT1



HOTT2



FEATURES

- Rear sliding doors, easily removable for cleaning
- 3 removable chrome plated shelves
- Internal humidity pan
- LED illumination with on/off switch

TECHNICAL SPECIFICATIONS

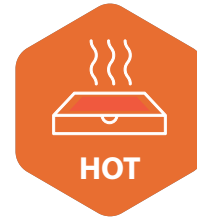
- Controller: Digital controller with temperature display on service side
- Temperature Range: +30°C ~ +90°C
- Power Supply: 13amp

MODEL	FINISH	GROSS CAPACITY	EXT. DIMENSIONS (H x W x D mm)	POWER CONSUMPTION	DECIBELS	WEIGHT (kg)
HOTT1	Stainless steel construction	130L	698 x 678 x 580	1100W	40dBA	49
HOTT2		160L	698 x 856 x 580	1500W	40dBA	54



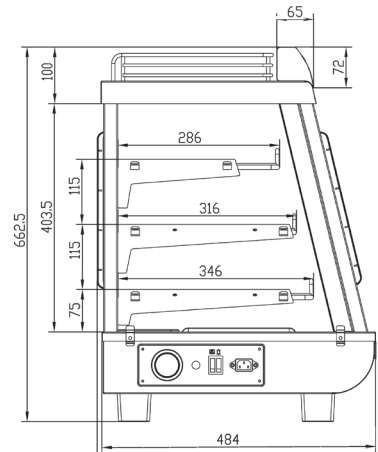
Counter Top Heated Merchandisers

Front & Rear Access



External top display area

HSS136



FEATURES

- Internal LED illumination on top
- 3 adjustable chrome plated shelves
- Front and rear access
- Internal humidity pan

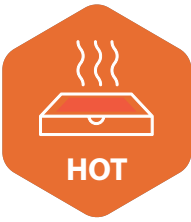
TECHNICAL SPECIFICATIONS

- Controller: Manual thermostat with analogue temperature display
- Temperature Range: +30°C ~ +90°C
- Power Supply: 13amp

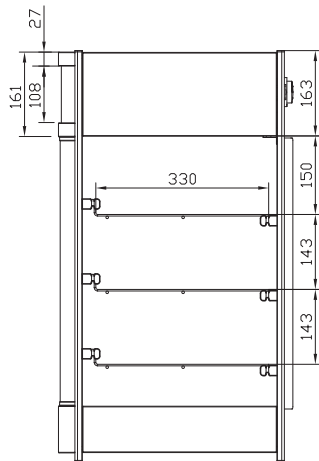
MODEL	FINISH	GROSS CAPACITY	EXT. DIMENSIONS (H x W x D mm)	POWER CONSUMPTION	DECIBELS	WEIGHT (kg)
HSS96	Stainless steel construction	96L	663 x 664 x 493	1000W	40dBA	36
HSS136		136L	663 x 900 x 493	1100W	40dBA	43.5
HSS186		186L	663 x 1204 x 493	1800W	40dBA	56



Counter Top Heated Merchandisers



Front decal can be customised - P.O.A



FEATURES

- Hinged glass doors to rear
- Three adjustable chrome plated shelves
- Front decal box is illuminated
- Internal illumination
- Mains cable on the side
- Internal humidity pan
- Perfect for displaying sausage rolls, pizza slices or samosa

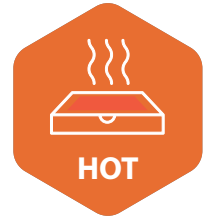
TECHNICAL SPECIFICATIONS

- Controller: Manual thermostat with analogue temperature display
- Temperature Range: +30°C ~ +90°C
- Power Supply: 13amp

MODEL	FINISH	GROSS CAPACITY	EXT. DIMENSIONS (H x W x D mm)	POWER CONSUMPTION	DECIBELS	WEIGHT (kg)
CTH97	Aluminium construction	97L	785 x 460 x 449	800W	40dBA	24
CTH137		137L	785 x 645 x 487	1000W	40dBA	29



Counter Top Heated Merchandisers



HDC1



FEATURES - HDC1

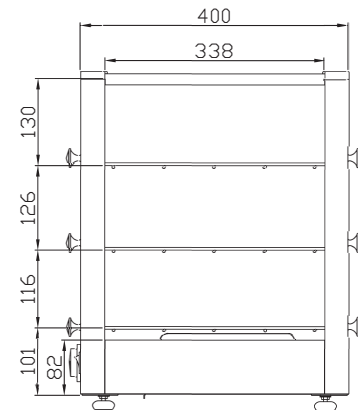
- Stainless steel construction
- Front curved glass
- Adjustable temperature controller
- 4x GN1/3 pans included (depth 40mm)
- Back doors

BPW1



FEATURES - BPW1

- Stainless steel construction
- Brilliant Internal LED illumination on sides
- Non-adjustable chrome plated shelves
- Adjustable temperature controller
- Front and rear access with hinge doors



TECHNICAL SPECIFICATIONS - HDC1 & BPW1

Controller:	Manual thermostat with analogue temperature display
Temperature Range:	+30°C ~ +90°C
Power Supply:	13amp

MODEL	GROSS CAPACITY	EXTERNAL DIMENSIONS (H x W x D mm)	POWER CONSUMPTION	DECIBELS	WEIGHT (kg)
HDC1	46L	336 x 773 x 420	500W	25dBA	18
BPW1	115L	500 x 700 x 400	1250W	25dBA	23



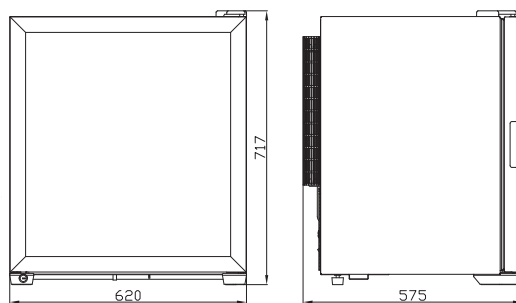
Counter Top Refrigerator & Freezer

CTR99

CTF99



Rear mounted controller



FEATURES

White laminated exterior

White ABS interior

Brilliant internal LED illumination on top

Double glazed door

Self closing door

3 adjustable PVC coated shelves

Frost free

Maintenance free condenser

Lockable Door

TECHNICAL SPECIFICATIONS

Controller: Digital controller with temperature display

Cooling: Ventilated

Defrost: Automatic

Refrigerant: R600a - Refrigerator
R290 - Freezer

Climate Class: 4

Decibels: 45dBA

Power Supply: 13amp

MODEL	GROSS CAPACITY	TEMPERATURE RANGE	EXT. DIMENSIONS (H x W x D mm)	ENERGY RATING	POWER CONSUMPTION	KWH /ANNUM	WEIGHT (kg)
CTR99	99L	0°C ~ +10°C	717 x 620 x 575	B	140W	586	44
CTF99	99L	-13°C ~ -22°C	717 x 620 x 575	D	160W	1991	44



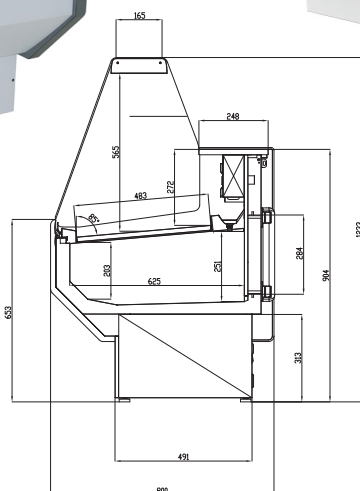
ZETA Slim Serve Over Counters

800mm Depth

ZETA100



ZETA200



IMPORTANT NOTE

Refrigerated serve over displays are designed to keep food products at refrigerated temperatures whilst displaying them for sale. These counters have built in under-storage. The concept of a display counter is to display products ready for sale, the under-storage is intended to store additional products moved from a refrigerator to enable the operator to restock the display deck when products have been sold.

Many display counters are open displays and are not intended to be used as a long term storage cabinet. Serve over display need to be switching off for cleaning and regular maintenance and often require a manual defrost as in the UK many operate in high humidity conditions which can cause icing up issues.

STAINLESS STEEL BACKSHELF

ANODISED ALUMINIUM TOP SHELF

FEATURES

Laminated steel exterior; Painted interior steel decks; Grey ABS injected side panels 40mm thick

Stainless steel backshelf

Anodised aluminium profiles

Intermediate glass shelf - 200mm deep

LED illumination under top canopy

Refrigerated under storage

Understorage door size 270 x 400 mm

Adjustable feet

Replaceable door gaskets

TECHNICAL SPECIFICATIONS

Controller: Digital controller with temperature display

Cooling: Static

Defrost: Automatic

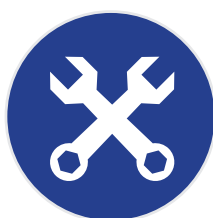
Refrigerant: R290

Climate Class: 3

Temperature Range: +2°C ~ +5°C

Power Supply: 13amp

MODEL	DOOR	DECK SIZE (W x D mm)	GROSS CAPACITY	EXT. DIMENSIONS (H x W x D mm)	POWER CONSUMPTION	DECIBELS	WEIGHT (kg)
ZETA100	1	975 x 483	335L	1233 x 1055 x 800	835W	45dBA	110
ZETA130	2	1225 x 483	421L	1233 x 1305 x 800	891W	47dBA	137
ZETA150	2	1445 x 483	497L	1233 x 1525 x 800	1031W	50dBA	151
ZETA200	3	1945 x 483	669L	1233 x 2025 x 800	1234W	52dBA	191
ZETA250	4	2445 x 483	840L	1233 x 2525 x 800	1331W	54dBA	242



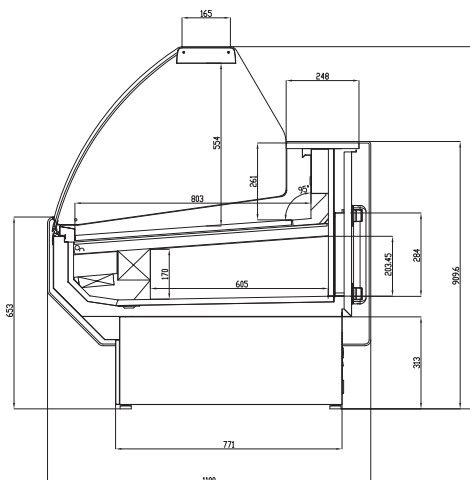
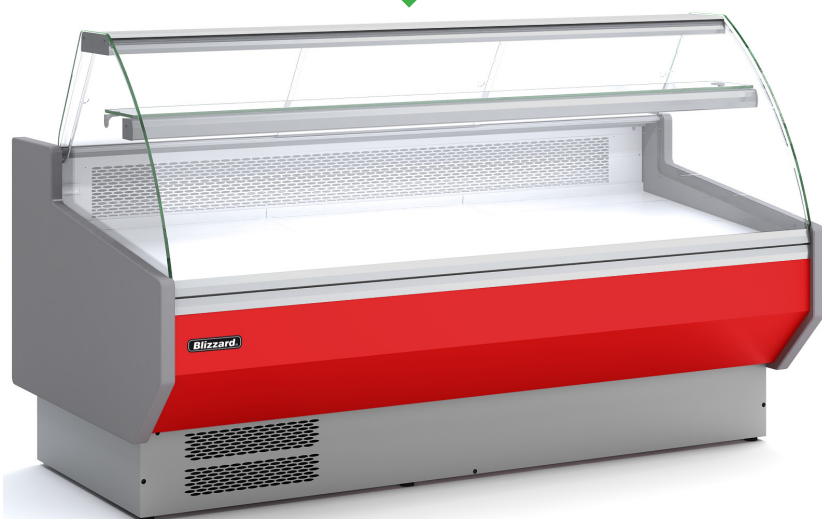
Glass structure requires assembly on site.

SIGMA Fresh Meat Serve Over Display

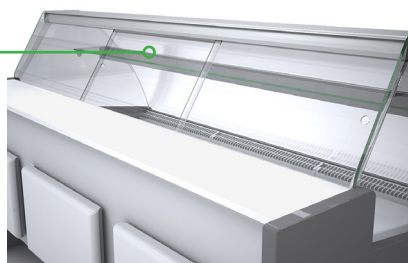
SIGMA20C



Suitable for
fresh meat
storage



Rear sliding
perspex doors



FEATURES

Laminated steel exterior; Painted interior steel decks; Grey ABS injected side panels 40mm thick

Curved glass hinged forward for cleaning

Stainless steel backshelf

Anodised aluminium profiles

LED illumination under top canopy;
Red fresh light options available (see page 224)

Refrigerated under storage, door size 440 x 270 mm

Intermediate glass shelf - 200mm deep

Rear sliding perspex doors

Adjustable feet

IMPORTANT NOTE

Refrigerated serve over displays are designed to keep food products at refrigerated temperatures whilst displaying them for sale. Some counters have built in under-storage. The concept of a display counter is to display products ready for sale, the under-storage is intended to store additional products moved from a refrigerator to enable the operator to restock the display deck when products have been sold.

Many display counters are open displays and are not intended to be used as a long term storage cabinet. Serve over display need to be switching off for cleaning and regular maintenance and often require a manual defrost as in the UK many operate in high humidity conditions which can cause icing up issues.

TECHNICAL SPECIFICATIONS

Controller:	Digital controller with temperature display
Cooling:	Ventilated
Defrost:	Automatic
Refrigerant:	R290
Climate Class:	3
Temperature Range:	0°C ~ +8°C
Power Supply:	13amp

MODEL	DOOR	DECK SIZE (W x D mm)	GROSS CAPACITY	EXT. DIMENSIONS (H x W x D mm)	POWER CONSUMPTION	DECIBELS	WEIGHT (kg)
SIGMA10C	1	975 x 803	459L	1232 x 1055 x 1100	856W	48dBA	170
SIGMA13C	2	1225 x 803	577L	1232 x 1305 x 1100	919W	52dBA	185
SIGMA15C	2	1445 x 803	681L	1232 x 1525 x 1100	1093W	54dBA	205
SIGMA20C	3	1945 x 803	917L	1232 x 2025 x 1100	1310W	54dBA	233
SIGMA25C	4	2445 x 803	1152L	1232 x 2525 x 1100	1373W	56dBA	283



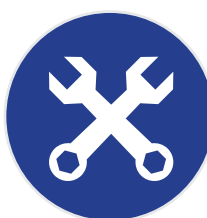
2
YEAR
WARRANTY



STAINLESS
STEEL
BACKSHELF



LED
LIGHTING

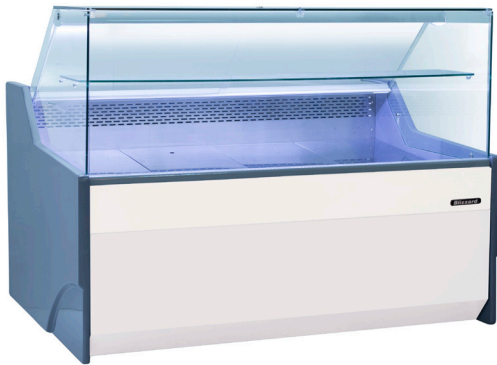


Glass
structure
requires
assembly
on site.

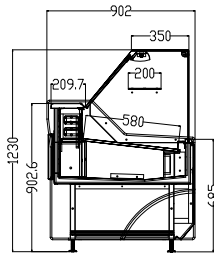
Flat Glass Serve Over Counters

902mm Depth

BFG130WH



BFG150BK



IMPORTANT NOTE

Refrigerated serve over displays are designed to keep food products at refrigerated temperatures whilst displaying them for sale. These counters have built in under-storage. The concept of a display counter is to display products ready for sale, the under-storage is intended to store additional products moved from a refrigerator to enable the operator to restock the display deck when products have been sold.

Many display counters are open displays and are not intended to be used as a long term storage cabinet. Serve over display need to be switching off for cleaning and regular maintenance and often require a manual defrost as in the UK many operate in high humidity conditions which can cause icing up issues.

FEATURES

Laminated steel exterior; Painted interior; Grey ABS injected side panels

Stainless steel backshelf & display deck

Anodised aluminium profiles

Sliding perspex door

Intermediate glass shelf

LED illumination under top canopy

Refrigerated under storage

Under storage door size 570mm x 325mm

Automatic vaporisation of condensate

Castor feet

Replaceable door gaskets

TECHNICAL SPECIFICATIONS

Controller: Digital controller with temperature display

Cooling: Fan assisted

Defrost: Automatic

Refrigerant: R290

Climate Class: 3

Temperature Range: +2°C ~ +8°C

Power Supply: 13amp

MODEL	DOOR	DECK SIZE (W x D mm)	GROSS CAPACITY	EXT. DIMENSIONS (H x W x D mm)	POWER CONSUMPTION	DECIBELS	WEIGHT (kg)
White Flat Glass Serve Over Display							
BFG130WH	1	1250 x 570	580L	1235 x 1340 x 902	550W	50dBA	195
BFG150WH	1	1500 x 570	700L	1235 x 1590 x 902	620W	52dBA	230
BFG200WH	2	1875 x 570	880L	1235 x 1965 x 902	650W	55dBA	290
Black Flat Glass Serve Over Display							
BFG130BK	1	1250 x 570	580L	1235 x 1340 x 902	550W	50dBA	195
BFG150BK	1	1500 x 570	700L	1235 x 1590 x 902	620W	52dBA	230
BFG200BK	2	1875 x 570	880L	1235 x 1965 x 902	650W	55dBA	290

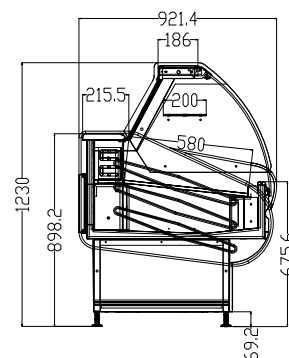
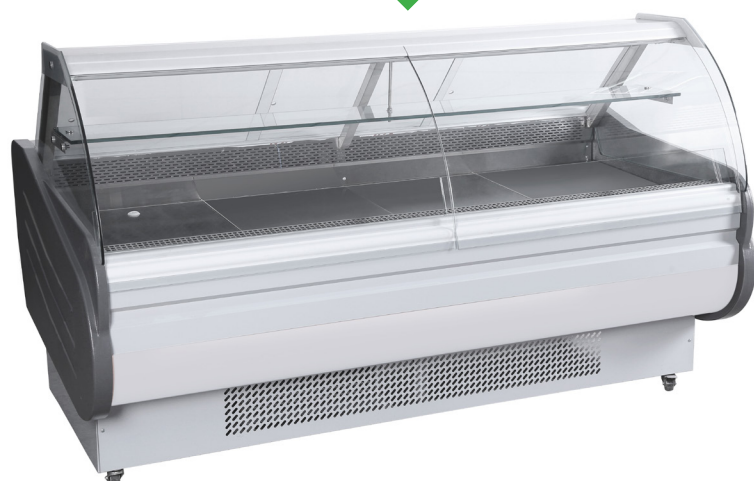


NOTES - Glass structure is fully assembled prior to despatch.

Curved Glass Serve Over Counters

921mm Depth

BCG200WH



Castor feet



IMPORTANT NOTE

Refrigerated serve over displays are designed to keep food products at refrigerated temperatures whilst displaying them for sale. These counters have built in under-storage. The concept of a display counter is to display products ready for sale, the under-storage is intended to store additional products moved from a refrigerator to enable the operator to restock the display deck when products have been sold.

Many display counters are open displays and are not intended to be used as a long term storage cabinet. Serve over display need to be switching off for cleaning and regular maintenance and often require a manual defrost as in the UK many operate in high humidity conditions which can cause icing up issues.

FEATURES

- Laminated steel exterior; Painted interior; Grey ABS injected side panels
- Stainless steel backshelf & display deck
- Anodised aluminium profiles
- Sliding perspex door
- Intermediate glass shelf
- LED illumination under top canopy
- Refrigerated under storage
- Under storage door size 570mm x 325mm
- Hydraulic front glass
- Automatic vaporisation of condensate
- Castor feet
- Replaceable door gaskets

TECHNICAL SPECIFICATIONS

- Controller: Digital controller with temperature display
- Cooling: Fan assisted
- Defrost: Automatic
- Refrigerant: R290
- Climate Class: 3
- Temperature Range: +2°C ~ +8°C
- Power Supply: 13amp

MODEL	DOOR	DECK SIZE (W x D mm)	GROSS CAPACITY	EXT. DIMENSIONS (H x W x D mm)	POWER CONSUMPTION	DECIBELS	WEIGHT (kg)
White Curved Glass Serve Over Display							
BCG130WH	1	1250 x 570	540L	1235 x 1340 x 921	550W	48dBA	195
BCG150WH	1	1500 x 570	650L	1235 x 1590 x 921	620W	52dBA	230
BCG200WH	2	1875 x 570	820L	1235 x 1965 x 921	650W	53dBA	290

NOTES - Glass structure is fully assembled prior to despatch.



Cold Display Counters

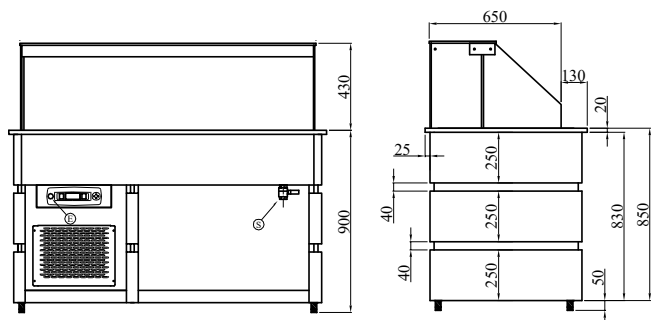
Wenge Finish



BCD1250



BCD1570



BCD1890

FEATURES

- Granite top
- Straight glass
- Illuminated canopy
- Refrigerated well has drain & drain tap
- Adjustable legs
- Gastronorm 150mm deep containers must be used (not supplied)

TECHNICAL SPECIFICATIONS

- Controller: Digital controller with temperature display
- Cooling: Static
- Defrost: Off cycle defrost
- Refrigerant: R290
- Climate Class: 3
- Temperature Range: +2°C ~ +10°C
- Power Supply: 13amp

MODEL	FINISH	CONTAINER CAPACITY	EXTERNAL DIMENSIONS (H x W x D mm)	POWER CONSUMPTION	WEIGHT (kg)
BCD1250	Wenge décor with stainless steel body and granite top	3x GN1/1	1330 x 1250 x 800	550W	135
BCD1570		4x GN1/1	1330 x 1570 x 800	550W	158
BCD1890		5x GN1/1	1330 x 1890 x 800	570W	205

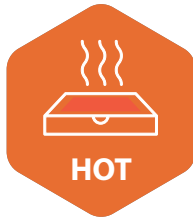


See page 5 for full GN container range

Hot Display Counters

Wenge Finish

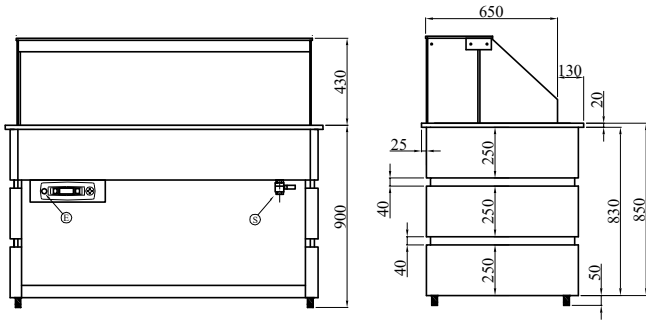
BHD1250



BHD1570



BHD1890



FEATURES

- Granite top
- Straight glass
- Illuminated canopy
- Wet well has drain & drain tap
- Adjustable legs
- Gastronorm containers up to maximum 150mm deep (not supplied)

TECHNICAL SPECIFICATIONS

- Controller: Manual thermostat
- Temperature Range: +40°C ~ +90°C
- Power Supply: 13amp (BHD1250 & BHD1570)
20amp (BHD1890)

MODEL	FINISH	CONTAINER CAPACITY	EXTERNAL DIMENSIONS (H x W x D mm)	POWER CONSUMPTION	WEIGHT (kg)
BHD1250	Wenge décor with stainless steel body and granite top	3x GN1/1	1330 x 1250 x 800	2000W	121
BHD1570		4x GN1/1	1330 x 1570 x 800	3000W	145
BHD1890		5x GN1/1	1330 x 1890 x 800	4000W	188

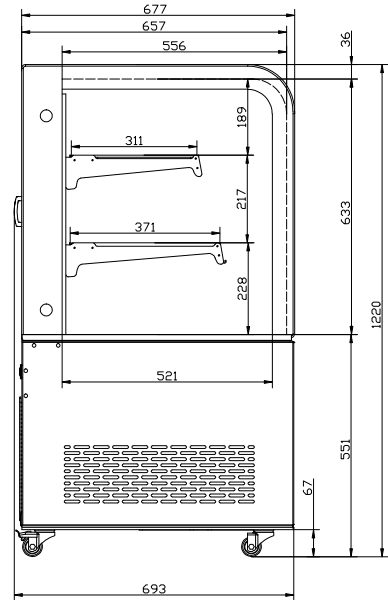


See page 5 for full GN container range

Mobile Display Merchandisers

Curved Glass

DC370



FEATURES

- Stainless steel construction
- Double glazed glass
- 2 x adjustable glass shelves
- Rear sliding doors for easy management
- LED lighting from top & underneath of each shelf
- 4 castors with 2 braked
- Suitable to be clad or built in
- Ideal for cafes and retail outlets looking to showcase and sell fresh food

TECHNICAL SPECIFICATIONS

Controller:	Digital controller with temperature display
Cooling:	Fan assisted
Defrost:	Automatic
Refrigerant:	R290
Climate Class:	3
Temperature Range:	+2°C ~ +8°C
Power Supply:	13amp

MODEL	GROSS CAPACITY	EXT. DIMENSIONS (H x W x D mm)	ENERGY RATING	POWER CONSUMPTION	KWH /ANNUM	DECIBELS	WEIGHT (kg)
DC270	295L	1220 x 916 x 693	C	480W	2702	55dBA	154
DC370	400L	1220 x 1216 x 693	C	490W	3157	55dBA	188
DC470	500L	1220 x 1516 x 693	C	500W	2511	55dBA	230



Mobile Display Merchandisers

Flat Glass

DF270



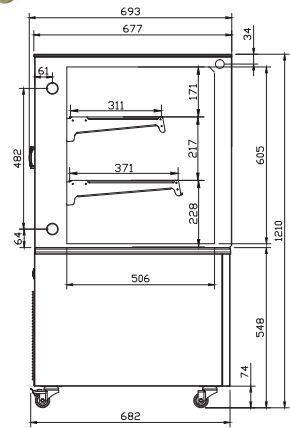
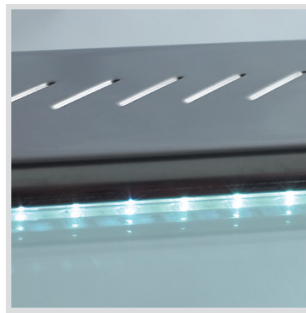
DF470



Adjustable glass shelves



LED lighting



FEATURES

- Stainless steel construction
- Double glazed glass
- 2 x adjustable glass shelves
- Rear sliding doors for easy management
- LED lighting from top & underneath of each shelf
- 4 castors with 2 braked
- Suitable to be cladded or built in
- Ideal for cafes and retail outlets looking to showcase and sell fresh food

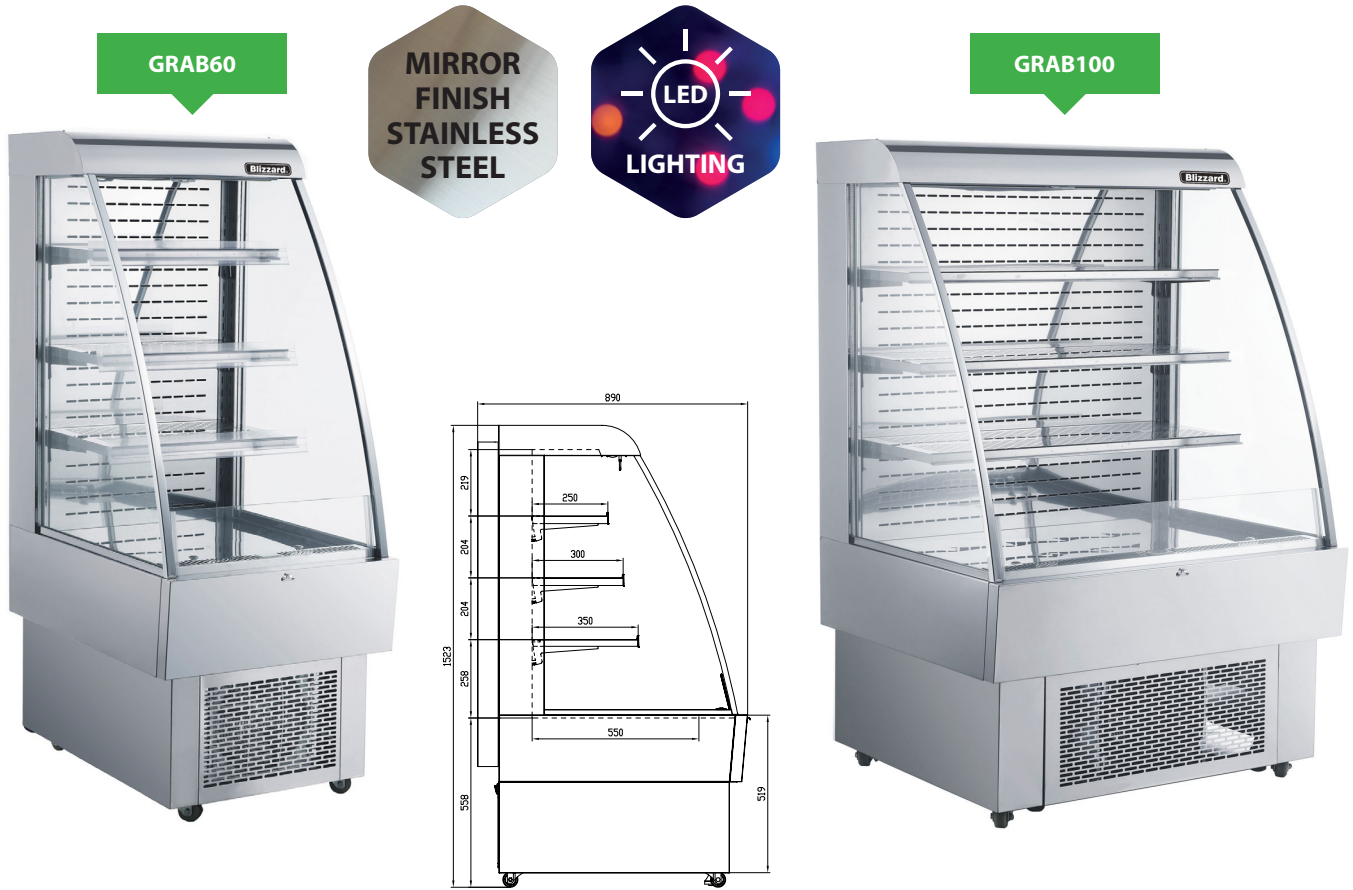
TECHNICAL SPECIFICATIONS

Controller:	Digital controller with temperature display
Cooling:	Fan assisted
Defrost:	Automatic
Refrigerant:	R290
Climate Class:	3
Temperature Range:	+2°C ~ +8°C
Power Supply:	13amp

MODEL	GROSS CAPACITY	EXT. DIMENSIONS (H x W x D mm)	ENERGY RATING	POWER CONSUMPTION	KWH /ANNUM	DECIBELS	WEIGHT (kg)
DF270	295L	1210 x 915 x 693	C	480W	2702	55dBA	154
DF370	400L	1210 x 1215 x 693	C	490W	3157	55dBA	188
DF470	500L	1210 x 1515 x 693	C	490W	2700	55dBA	230



Grab 'n' Go Open Front Merchandisers



FEATURES

- Mirror finish stainless steel construction
- Three adjustable stainless steel perforated shelves
- Castors as standard
- Night blind fitted as standard
- LED lighting on top and base
- Double glazed glass panels
- Easy access to condenser filter
- Ticket strips
- On/Off & light switch to rear

TECHNICAL SPECIFICATIONS

Controller:	Digital controller with temperature display
Cooling:	Fan assisted
Defrost:	Automatic
Refrigerant:	R290
Climate Class:	3
Temperature Range:	+2°C ~ +12°C
Power Supply:	13amp

MODEL	GROSS CAPACITY	EXT. DIMENSIONS (H x W x D mm)	ENERGY RATING	POWER CONSUMPTION	KWH /ANNUM	DECIBELS	WEIGHT (kg)
GRAB60	230L	1523 x 600 x 890	F	1340W	6061	55dBA	102
GRAB100	380L	1523 x 1000 x 890	G	1400W	6260	55dBA	129



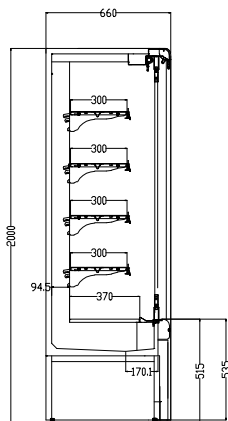
Slim Tiered Display

660mm Depth

BTD200WH

BTD130BK

BTD150SS



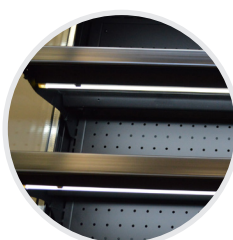
FEATURES

- Choice of finish - white laminated, black laminated or stainless steel
- 4 heavy duty adjustable shelves (300mm deep) with pricing strips
- Condenser over temperature audible alarm
- Adjustable feet
- Night blind fitted as standard
- Internal illumination - LED lighting to each shelf
- Tempered glass side panels
- Clear acrylic shelf edge risers
- Easy access to condenser for maintenance

TECHNICAL SPECIFICATIONS

Controller:	Digital controller with temperature display
Cooling:	Ventilated
Defrost:	Automatic
Refrigerant:	R290
Climate Class:	3
Temperature Range:	+2°C ~ +10°C
Decibels:	65dBA
Power Supply:	2x 13amp

MODEL	FINISH	GROSS CAPACITY	EXT. DIMENSIONS (H x W x D mm)	ENERGY RATING	POWER CONSUMPTION	KWH /ANNUM	WEIGHT (kg)
BTD70WH	White laminated exterior & interior	240L	2000 x 685 x 660	F	1104W	7050	187
BTD100WH		360L	2000 x 1000 x 660	F	1296W	10738	225
BTD130WH		470L	2000 x 1310 x 660	F	2195W	9312	272
BTD150WH		540L	2000 x 1500 x 660	F	2340W	10214	310
BTD200WH		720L	2000 x 1935 x 660	G	2518W	13554	370
BTD70BK	Black laminated exterior & interior	240L	2000 x 685 x 660	F	1104W	7050	187
BTD100BK		360L	2000 x 1000 x 660	F	1296W	10738	225
BTD130BK		470L	2000 x 1310 x 660	F	2195W	9312	272
BTD150BK		540L	2000 x 1500 x 660	F	2340W	10214	310
BTD200BK		720L	2000 x 1935 x 660	G	2518W	13554	370
BTD70SS	Stainless Steel exterior & black interior	240L	2000 x 685 x 660	F	1104W	7050	187
BTD100SS		360L	2000 x 1000 x 660	F	1296W	10738	225
BTD130SS		470L	2000 x 1310 x 660	F	2195W	9312	272
BTD150SS		540L	2000 x 1500 x 660	F	2340W	10214	310
BTD200SS		720L	2000 x 1935 x 660	G	2518W	13554	370

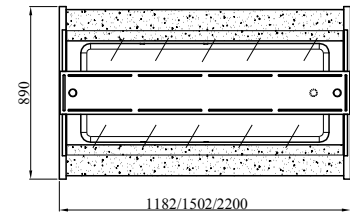
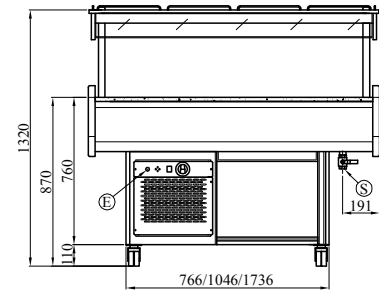


Brilliant
LED
Lighting

Cold Buffet Display

Teakwood Finish

GB4-COLD



FEATURES

- Granite top
- Illuminated canopy
- Refrigerated well has drain & drain tap
- Castors as standard with 2 braked
- Gastronorm 150mm deep containers must be used (not supplied)

TECHNICAL SPECIFICATIONS

Controller:	Digital controller with temperature display
Cooling:	Static
Defrost:	Off cycle defrost
Refrigerant:	R290
Climate Class:	3
Temperature Range:	+2°C ~ +10°C
Power Supply:	13amp

MODEL	FINISH	CONTAINER CAPACITY	EXTERNAL DIMENSIONS (H x W x D mm)	POWER CONSUMPTION	WEIGHT (kg)
GB3-COLD	Wood (Teakwood) & stainless steel exterior with granite top	3x GN1/1	1320 x 1182 x 890	550W	167
GB4-COLD		4x GN1/1	1320 x 1502 x 890	550W	189
GB6-COLD		6x GN1/1	1320 x 2200 x 890	570W	256

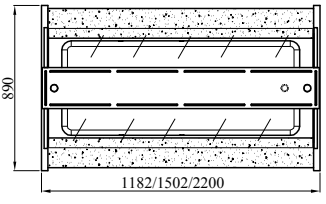
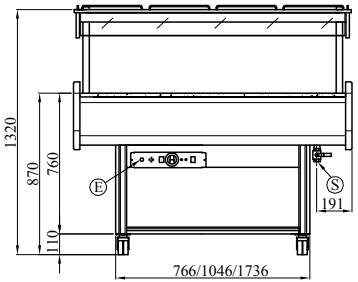
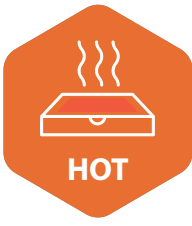


See page 5 for full GN container range

Hot Buffet Display

Teakwood Finish

GB4-HOT



GB900PLATE



Two heated plate dispensers, holding 50 plates each - diameter 240-320mm

FEATURES

- Granite top
- Illuminated canopy
- Wet well has drain & drain tap
- Castors as standard with 2 braked
- Gastronorm containers up to maximum 150mm deep (not supplied)

TECHNICAL SPECIFICATIONS

- Controller: Manual thermostat
- Temperature Range: +40°C ~ +90°C
- Power Supply: 13amp (GB3, GB4, GB900) 20amp (GB6)

MODEL	FINISH	CONTAINER CAPACITY	EXTERNAL DIMENSIONS (H x W x D mm)	POWER CONSUMPTION	WEIGHT (kg)
GB3-HOT	Wood (Teakwood) & stainless steel exterior with granite top	3x GN1/1	1320 x 1182 x 890	2000W	143
GB4-HOT		4x GN1/1	1320 x 1502 x 890	3000W	172
GB6-HOT		6x GN1/1	1320 x 2200 x 890	4000W	246
GB900PLATE		100 Plates	890 x 900 x 870	1500W	165



See page 5 for full GN container range

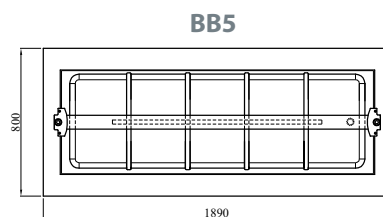
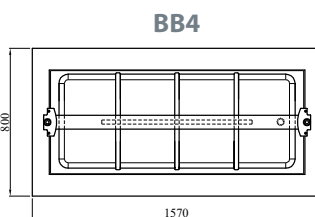
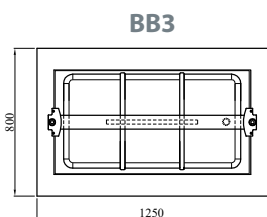
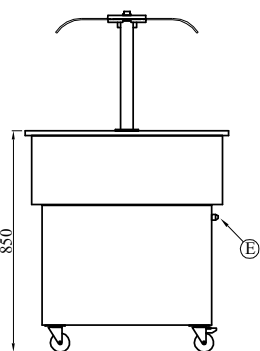
Cold Buffet Display

Wenge Finish

BB4-COLD-WE



BB3-COLD-WE



FEATURES

- Black granite top
- Curved glass canopy with illumination
- Refrigerated well has drain & drain tap
- Castors as standard with 2 braked
- Gastronorm 150mm deep containers must be used (not supplied)
- Tray slides available (see page 77)

TECHNICAL SPECIFICATIONS

Controller:	Digital controller with temperature display
Cooling:	Static
Defrost:	Off cycle defrost
Refrigerant:	R290
Climate Class:	3
Temperature Range:	+2°C ~ +10°C
Power Supply:	13amp

MODEL	FINISH	CONTAINER CAPACITY	EXTERNAL DIMENSIONS (H x W x D mm)	POWER CONSUMPTION	WEIGHT (kg)
BB3-COLD-WE	Wenge décor with stainless steel body and black granite top	3x GN1/1	1355 x 1250 x 800	553W	175
BB4-COLD-WE		4x GN1/1	1355 x 1570 x 800	568W	200
BB5-COLD-WE		5x GN1/1	1355 x 1890 x 800	576W	252



See page 5 for full GN container range



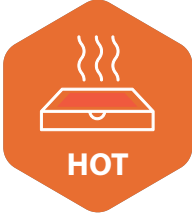
Optional tray slide - See page 77

Hot Buffet Display & Heated Plate Dispenser

Wenge Finish



BB5-HOT-WE



FEATURES

- Black granite top
- Curved glass canopy with illumination
- Wet well bain marie has drain & drain tap
- Castors as standard with 2 braked
- Gastronorm containers up to maximum 150mm deep (not supplied)
- Tray slides available (see page 77)

TECHNICAL SPECIFICATIONS

Controller:	Manual thermostat
Temperature Range:	+40°C ~ +90°C
Power Supply:	13amp

MODEL	FINISH	CONTAINER CAPACITY	EXTERNAL DIMENSIONS (H x W x D mm)	POWER CONSUMPTION	WEIGHT (kg)
BB3-HOT-WE	Wenge décor with stainless steel body and black granite top	3x GN1/1	1355 x 1250 x 800	2000W	145
BB4-HOT-WE		4x GN1/1	1355 x 1570 x 800	3000W	172
BB5-HOT-WE		5x GN1/1	1355 x 1890 x 800	3000W	220



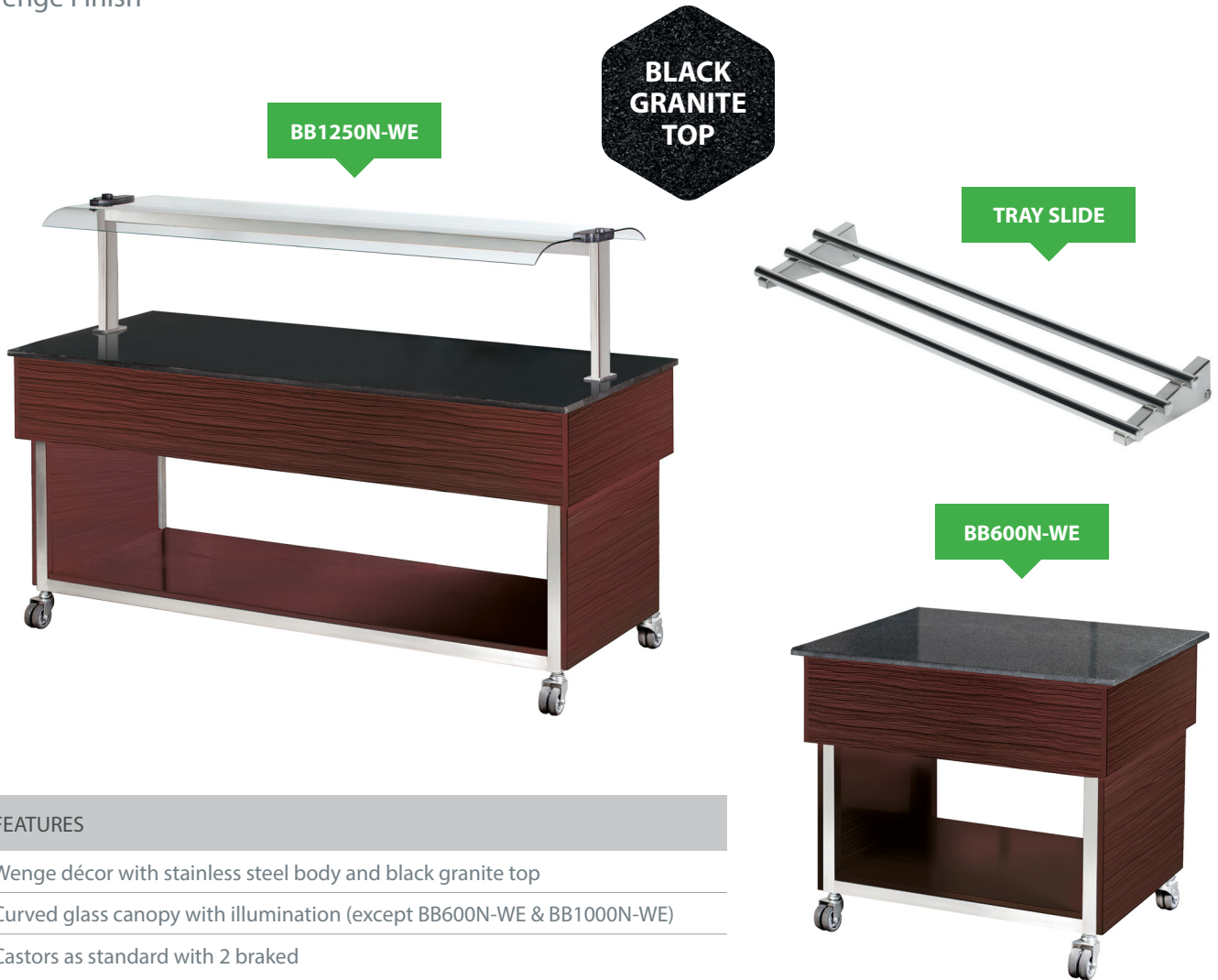
See page 5 for full GN container range



Optional tray slide - See page 77

Neutral Display Cabinet & Tray Slide

Wenge Finish



FEATURES

Wenge décor with stainless steel body and black granite top

Curved glass canopy with illumination (except BB600N-WE & BB1000N-WE)

Castors as standard with 2 braked

MODEL	DESCRIPTION	EXTERNAL DIMENSIONS (H x W x D mm)	WEIGHT (kg)
BB600N-WE	600mm wide neutral display (without glass canopy)	880 x 600 x 800	90
BB1250N-WE	1250mm wide neutral display	1300 x 1250 x 800	140
BB1570N-WE	1570mm wide neutral display	1300 x 1570 x 800	160
BB1890N-WE	1890mm wide neutral display	1300 x 1890 x 800	200
BBTRAY570	Tray slide for BB600N-WE	570 x 300	-
BBTRAY970	Tray slide for BB1000N-WE & BB1000PLATE-WE	970 x 300	-
BBTRAY1220	Tray slide for BB3 & BB1250N-WE	1220 x 300	-
BBTRAY1540	Tray slide for BB4 & BB1570N-WE	1540 x 300	-
BBTRAY1770	Tray slide for BB5 & BB1890N-WE	1860 x 300	-

Curved Glass Lid Freezer



Full capacity baskets supplied!



Suitable for ice lolly storage

FEATURES

- White laminated exterior
- White painted aluminium interior
- Aluminium door frame
- Aluminium interior
- Lockable curved sliding glass lid
- Internal LED illumination
- Defrost water drain hole
- Four caster wheels

TECHNICAL SPECIFICATIONS

- Controller: Manual thermostat
- Cooling: Static
- Defrost: Manual
- Refrigerant: R290
- Climate Class: 4
- Temperature Range: -18°C ~ -22°C
- Decibels: 48dBA
- Power Supply: 13amp

MODEL	GROSS CAPACITY	BASKETS SUPPLIED	MAX. BASKETS	EXT. DIMENSIONS (H x W x D mm)	ENERGY RATING	POWER CONSUMPTION	KWH /ANNUM	WEIGHT (kg)
BDF22	220L	2	2	850 x 740 x 680	C	186W	978	58
BDF32	320L	3	3	850 x 1030 x 680	C	198W	1014	60.5
BDF42	420L	4	4	850 x 1270 x 680	C	210W	1025	69
BDF52	520L	5	5	850 x 1530 x 680	C	248W	1289	72.5
BDF62	620L	6	6	850 x 1810 x 680	D	252W	2017	81





MEDICAL EQUIPMENT

Pharmacy Refrigerators

Now more than ever it is key that we support our medical industry in any way we can and that is why here at Blizzard we're proud to supply medical standard refrigerators to the sector.

Pharmacy Refrigerator

MED140



Stackable with kit
M4-UCRSTACK



For convenience the thermometer sensor has been fitted to the cabinet ready for use. Supplied with 2x monthly Temperature log sheets ready for immediate use.

FEATURES

- White laminated exterior; ABS interior
- Secondary alarm thermometer accuracy of +/- 0.5°C
- Audible and visual temperature alarm - HI/LO alarm
- MAX and MIN temperature monitoring
- Battery powered temperature monitoring in case of power failure
- Height adjustable from 819 – 850mm
- Stackable with stacking kit (M4-UCRSTACK)
- Reversible door
- Lock fitted as standard
- Adjustable shelves
- Replaceable door gasket

TECHNICAL SPECIFICATIONS

Controller:	Digital controller with temperature display. Pre-set and locked to operate at a set point of 5°C. Secondary alarm thermometer with fitted sealed glycol sensor.
Cooling:	Fan assisted
Defrost:	Automatic
Refrigerant:	R600a
Climate Class:	4
Temperature Range:	+2°C ~ +8°C
Power Supply:	13amp

MODEL	GROSS CAPACITY	EXTERNAL DIMENSIONS (H x W x D mm)	POWER CONSUMPTION	DECIBELS	WEIGHT (kg)
MED140	145L	819 x 598 x 648*	135W	53dBA	38

* Depth 598mm without handle

OPTIONAL EXTRAS

M4-UCRSTACK	Stacking kit
-------------	--------------



3
YEAR
WARRANTY



COOKING & PREPARATION

**Microwaves | Convection Ovens | Pizza Ovens | Induction Hobs
Salamander Grills | Toasters | Grills | Griddles | Fryers | Bain Mariés
Planetary Mixers | Combination Ovens**

From cooking to reheating and mixing to toasting we have every catering appliance you could ever wish for. With new arrivals in the shape of our BPO pizza ovens and old faithful's in our outstanding value BCM microwaves you're sure to be able to kit out your catering kitchen for less.

Commercial Microwaves

Light duty BCM1000

Heavy duty BCM1800 & BCM2100



BCM1000



BCM1800 / BCM2100 stacking



BCM1800

BCM2100

FEATURES

Sturdy aluminium handle

Ceramic base

Interior light

5 power levels including defrost

3 cooking stages

10 preset cooking times

10 programmable keys

Stackable (kit supplied) - BCM1800 & BCM2100

TECHNICAL SPECIFICATIONS

	BCM1000	BCM1800	BCM2100
Controller:	Convenient touch controls		
Power Output:	1000W	1800W	2100W
Power Supply:	13amp	13amp	16amp^A

^Arequire designated power supply

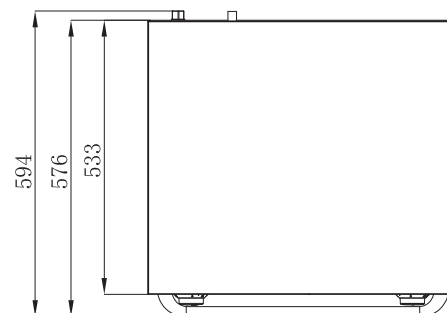
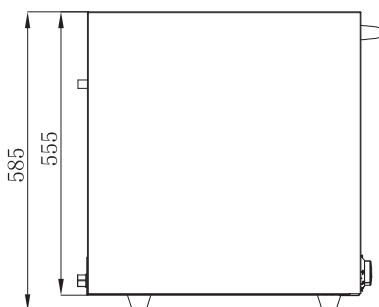
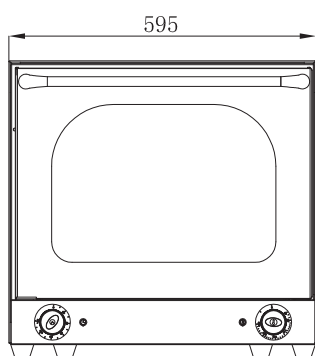
MODEL	FINISH	CAPACITY	EXTERNAL DIMENSIONS (H x W x D mm)	CAVITY DIMENSIONS (H x W x D mm)	WEIGHT (kg)
BCM1000	Stainless steel exterior & interior	25L	311 x 511 x 356 (398*)	200 x 310 x 300	16.5
BCM1800		34L	368 x 575 x 493 (527*)	230 x 350 x 400	34.5
BCM2100		34L	368 x 575 x 493 (527*)	230 x 350 x 400	34.5

* including handle

Convection Oven

Ideal for baking, cooking, reheating and warming

BCO1



FEATURES

- Removable double glazed door
- Removable racks for easy cleaning
- Internal illumination
- Timer 0-120mins - auto off
- 4 aluminium trays supplied; tray size: 315 x 440 mm
- Twin fan motors for consistent temperature
- Replaceable door gasket

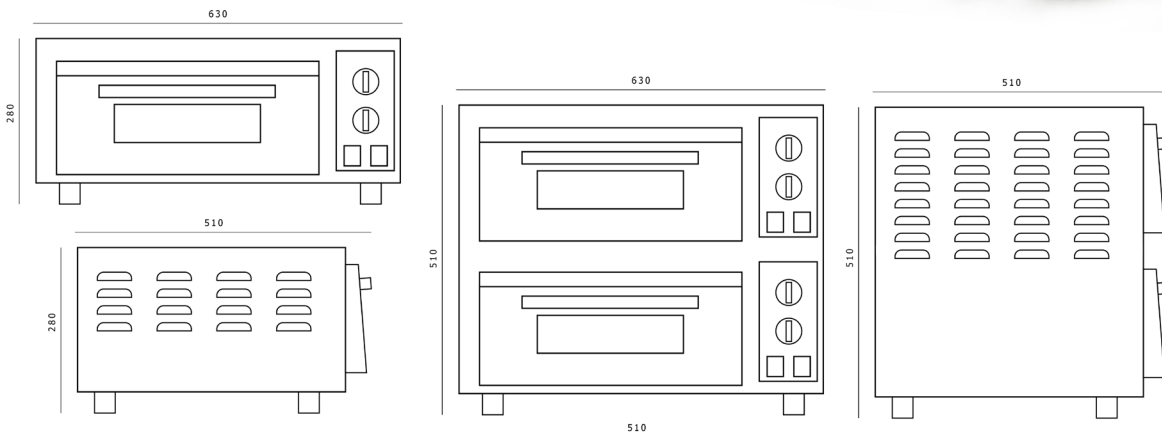
TECHNICAL SPECIFICATIONS

- Controller: Manual thermostat
- Temperature Range: +50°C ~ +300°C
- Power Consumption: 2670W
- Power Supply: 13amp

MODEL	FINISH	GROSS CAPACITY	EXTERNAL DIMENSIONS (H x W x D mm)	CAVITY DIMENSIONS (H x W x D mm)	WEIGHT (kg)
BCO1	Stainless steel exterior; enamelled interior	60L	585 x 595 x 594	350 x 460 x 375	41



Pizza Oven



FEATURES

- Stainless steel finish
- Manual controls - Separate control of upper and lower elements
- Timer up to 30 minutes (Heating Unaffected)
- Stone base
- Windowed door
- Internal lighting
- Cabinets can be stacked up to a maximum of 3 decks

TECHNICAL SPECIFICATIONS

	BPO1	BPO2
Power Supply:	13amp	30amp
Temperature Range:	+50°C ~ +400°C	
Controller:	Mechanical Thermostat	

MODEL	DESCRIPTION	EXT. DIMENSIONS (H x W x D mm)	COOKING CAPACITY	POWER CONSUMPTION	WEIGHT (kg)
BPO1	Single deck pizza oven	280 x 630 x 510	1 x 16"	2400W	24.6
BPO2	Double deck pizza oven	510 x 630 x 510	2 x 16"	4800W	44.6



Induction Hob

A quick and efficient way of heating food



FEATURES

- Stainless steel construction
- Energy efficient
- Glass hob
- Quick to heat up and cook
- Stylish glass fronted touch control panel with LED display
- Temperature control
- Timer 0-180mins
- Auto off after 2 hours of inactivity

TECHNICAL SPECIFICATIONS

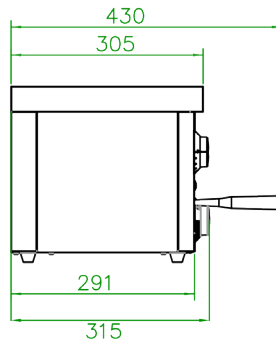
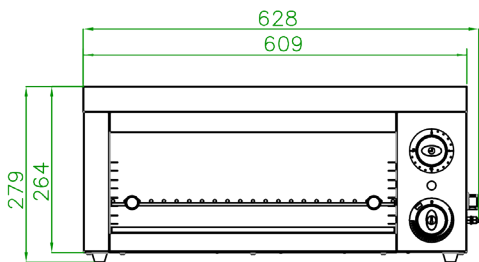
	BIH1/BSPIH	BIH2
Power Supply:	13amp	30amp
Temperature Range:	+60°C ~ +240°C	
Controller:	Touch controls with LED display	
Variable Power Level Settings:	500 - 3000W per zone	

MODEL	DESCRIPTION	EXT. DIMENSIONS (H x W x D mm)	INDUCTION PAN SIZE (MIN - MAX)	POWER CONSUMPTION	WEIGHT (kg)
BIH1	Single induction hob	117 x 340 x 432	Ø12cm - 26cm	3000W	7.5
BIH2	Double induction hob	123 x 390 x 713	Ø12cm - 26cm	6000W	15.2
BSPIH	Induction hob for stock pot	130 x 440 x 540	Ø17cm - 34cm	3000W	10.9



Salamander Grill

BSG1



FEATURES

- Stainless steel construction
- Adjustable chrome plated grill rack with handles
- 4 cooking height levels
- Integral crumb tray
- Time 0-15mins

TECHNICAL SPECIFICATIONS

- Controller: Variable heat control
- Power Consumption: 2000W
- Power Supply: 13amp

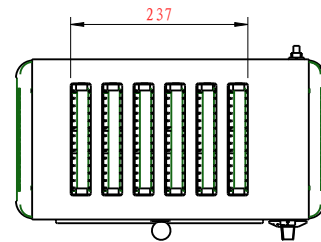
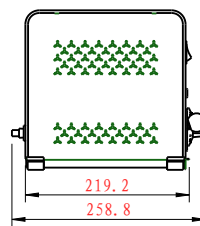
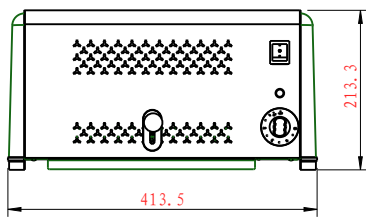
MODEL	FINISH	EXTERNAL DIMENSIONS (H x W x D mm)	WEIGHT (kg)
BSG1	Stainless steel construction	279 x 628 x 315 (430*)	19
T3-WALLBRKTBSG		-	-

* including handle



6 Slot Toaster

B6ST



FEATURES

Stainless steel construction

Removable crumb tray

Mechanical timer - auto off

Toast lifting lever

Takes 6 slices -
max slice dimensions 140mm x 130mm x 20mm thick

Note: Warranty is return to base

TECHNICAL SPECIFICATIONS

Heating settings: 2 / 4 / 6 slices

Power Consumption: 2500W

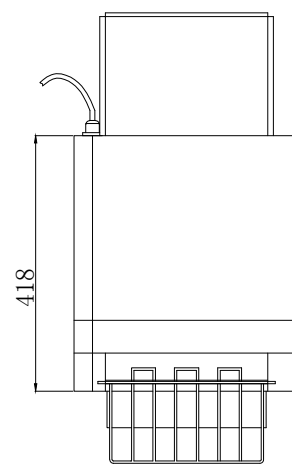
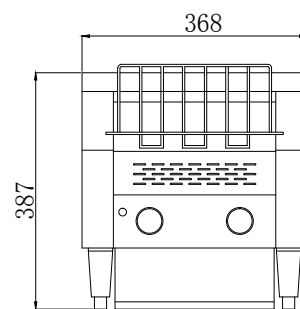
Power Supply: 13amp

MODEL	FINISH	EXTERNAL DIMENSIONS (H x W x D mm)	WEIGHT (kg)
B6ST	Stainless steel construction	214 x 414 x 259	6



Conveyor Toaster

BCT2



FEATURES

- Stainless steel construction
- Adjustable speed control
- Front or rear chute options
- Removable crumb tray
- 'V' shaped heat deflectors
- Adjustable legs: 105-140mm
- Maximum approx. 360 slices per hour output
- 25 second cycle time
- Takes 2 slices side by side

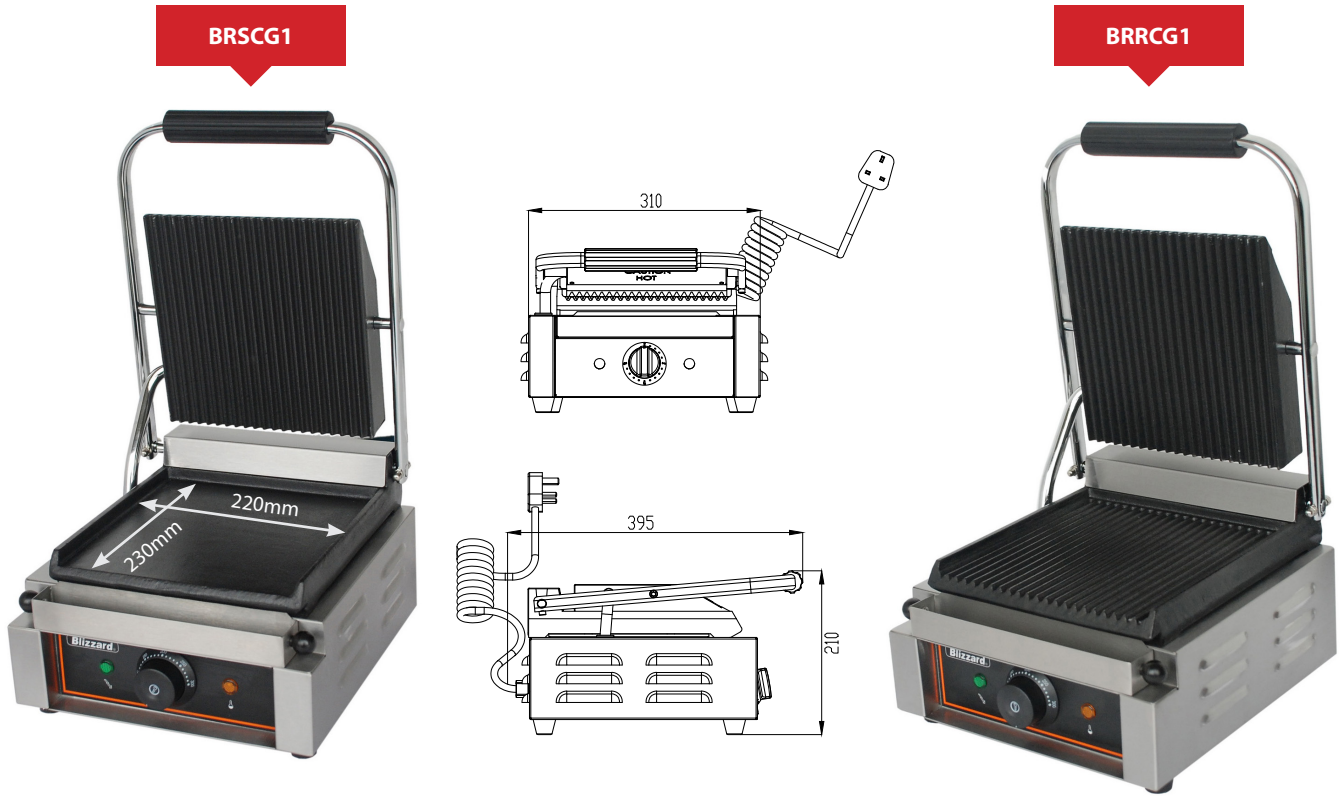
TECHNICAL SPECIFICATIONS

- Temperature Range: 3 temp settings: warm / top element only / top and bottom element
- Power Consumption: 2240W
- Power Supply: 13amp

MODEL	FINISH	EXTERNAL DIMENSIONS (H x W x D mm)	WEIGHT (kg)
BCT2	Stainless steel construction	387 x 368 x 418	18



Single Contact Grill



IMPORTANT - SEASONING THE COOKING SURFACES BEFORE USE

The cooking surfaces need to be seasoned before using for the first time at a temperature of 110°C.

FEATURES

- Stainless steel construction
- Ribbed or smooth bottom plate options
- Supplied with wire cleaning brush
- Cast iron plates
- Counter balanced top plates
- Removable drip tray

TECHNICAL SPECIFICATIONS

- Controller: Manual thermostat
- Temperature Range: +50°C ~ +300°C
- Power Consumption: 1800W
- Power Supply: 13amp

MODEL	FINISH	EXTERNAL DIMENSIONS (H x W x D mm)	WEIGHT (kg)
BRSCG1	Top ribbed, bottom smooth	210 x 310 x 395	16
BRRCG1	Top ribbed, bottom ribbed	210 x 310 x 395	16

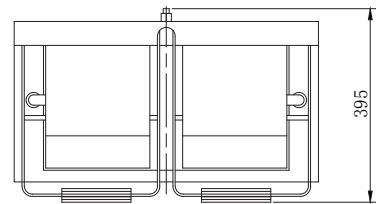
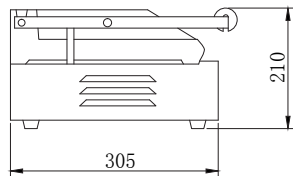
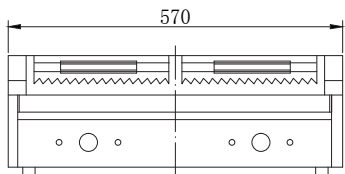


Double Contact Grill

BRSCG2



BRRCG2



IMPORTANT - SEASONING THE COOKING SURFACES BEFORE USE

The cooking surfaces need to be seasoned before using for the first time at a temperature of 110°C.

FEATURES

- Stainless steel construction
- Ribbed or smooth bottom plate options
- Supplied with wire cleaning brush
- Cast iron plates
- Counter balanced top plates
- Removable drip tray

TECHNICAL SPECIFICATIONS

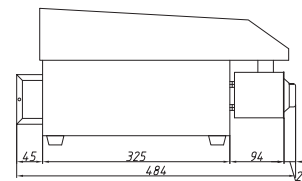
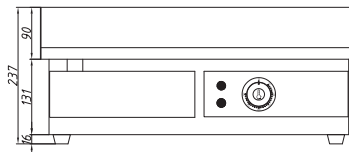
Controller:	Manual thermostat
Temperature Range:	+50°C ~ +300°C
Power Consumption:	1800+1800W
Power Supply:	2x 13amp

MODEL	FINISH	EXTERNAL DIMENSIONS (H x W x D mm)	WEIGHT (kg)
BRSCG2	Top ribbed, bottom smooth	210 x 570 x 395	30
BRRCG2	Top ribbed, bottom ribbed	210 x 570 x 395	30

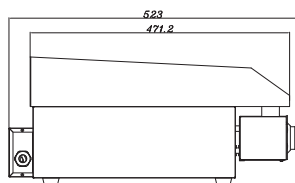
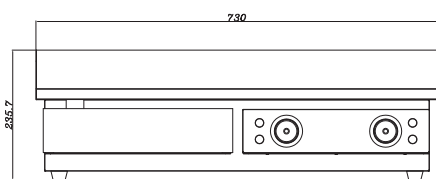


Flat Top Griddle

BG1A



BG2A



IMPORTANT - SEASONING THE COOKING SURFACES BEFORE USE

The cooking surfaces need to be seasoned before using for the first time at a temperature of 110°C.

FEATURES

Stainless steel construction

8mm steel plate

Removable drip tray

TECHNICAL SPECIFICATIONS

	BG1	BG2
Controller:	Manual thermostat	
Temperature Range:	+50°C ~ 300°C	
Power Consumption:	3000W	2000+2000W
Power Supply:	13amp	2x 13amp

MODEL	FINISH	EXTERNAL DIMENSIONS (H x W x D mm)	WEIGHT (kg)
BG1A	Stainless steel single flat top	237 x 550 x 484	25
BG2A	Stainless steel double flat top	236 x 730 x 523	36

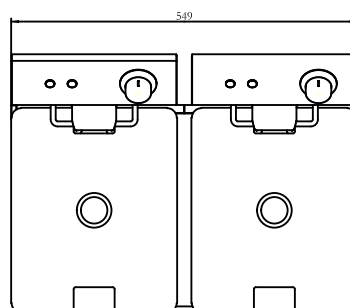
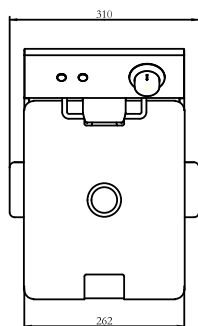
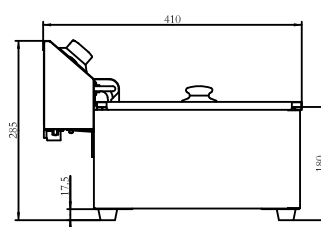
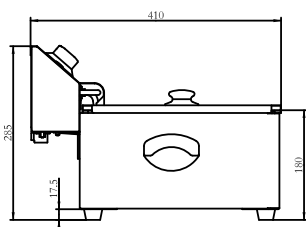


Electric Fryer

BF6



BF6+6



FEATURES

- Stainless steel construction
- Removable tank
- Mesh batter plate
- Lids and baskets supplied
- Basket dimensions - 240 x 185 x 100mm deep
- Safety cut out

TECHNICAL SPECIFICATIONS

	BF6	BF6+6
Controller:	Manual thermostat	
Temperature Range:	+50°C ~ +190°C	
Power Consumption:	2500W	2500+2500W
Power Supply:	13amp	2x 13amp

MODEL	FINISH	CAPACITY	EXTERNAL DIMENSIONS (H x W x D mm)	WEIGHT (kg)
BF6	Stainless steel single tank	6L	285 x 310 x 410	6
BF6+6	Stainless steel twin tank	2x 6L	285 x 549 x 410	12

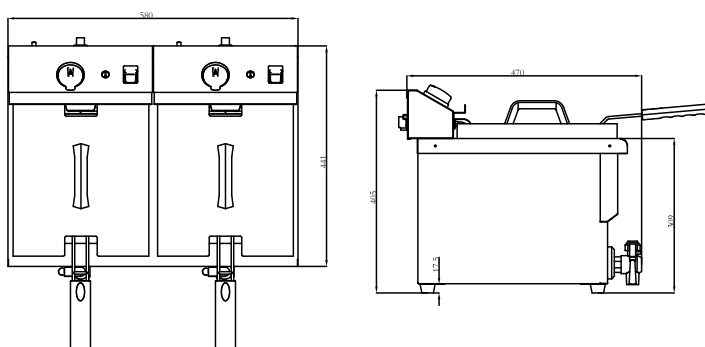
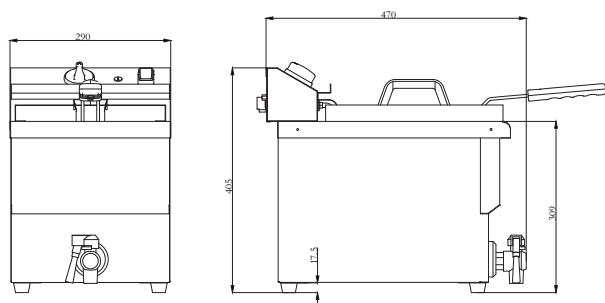


Electric Fryer with Tap

BF8



BF8+8



FEATURES

Stainless steel construction

Mesh batter plate

Lids and baskets supplied

Basket dimensions - 230 x 190 x 140mm deep

Safety cut out

Drain tap

TECHNICAL SPECIFICATIONS

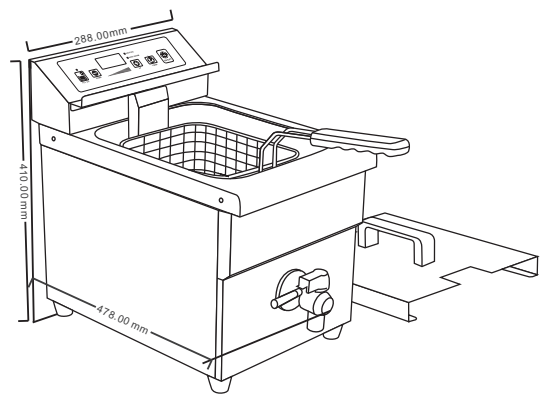
	BF8	BF8+8
Controller:	Manual thermostat	
Temperature Range:	+50°C ~ +190°C	
Power Consumption:	3000W	3000+3000W
Power Supply:	13amp	2x 13amp

MODEL	FINISH	CAPACITY	EXTERNAL DIMENSIONS (H x W x D mm)	WEIGHT (kg)
BF8	Stainless steel single tank	8L	405 x 290 x 470	11
BF8+8	Stainless steel double tank	2x 8L	405 x 580 x 470	19



Induction Fryer

BIF



BENEFITS OF INDUCTION FRYING

The Induction fryer has the advantage of less aggressive heating with more even heat distribution than the traditional type of fryer, the advanced energy and timer controls make it more efficient to use with the interior smooth surfaces making it easy to clean with no exposed heater. The precise temperature control and even heating can extend oil life.

FEATURES

- Stainless steel construction
- Tank with rounded corners for easy cleaning
- Stylish glass fronted touch control panel with large LED display, ensures longevity and easy cleaning
- Temperature control, with an Auto-OFF timer function
- Crumb tray
- Lids and baskets supplied
- Basket dimensions - 235 x 195x 145mm deep
- Safety cut out
- Heavy duty drain tap

TECHNICAL SPECIFICATIONS

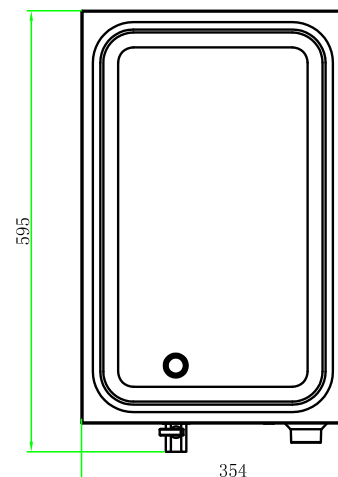
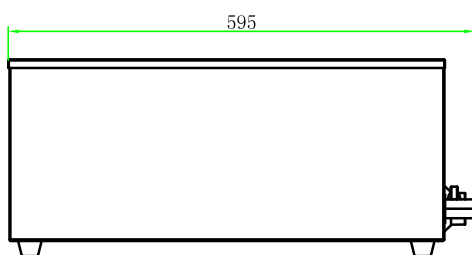
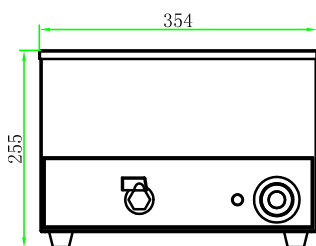
- Controller: Touch controls with LED display
- Timer: 5 - 120 mins
- Temperature Range: +60°C ~ +190°C
- Power Consumption: 3000W
- Power Supply: 13amp

MODEL	FINISH	CAPACITY	EXTERNAL DIMENSIONS (H x W x D mm)	WEIGHT (kg)
BIF	Stainless steel single tank	8L	410 x 288 x 478	13.9



Bain Marie with Containers

BBM1



FEATURES

- Stainless steel construction
- Suitable for containers up to 150mm deep
- Drainage tap positioned at the front
- Wet well
- Supplied with 3x GN1/3 containers with lids

TECHNICAL SPECIFICATIONS

- Controller: Manual thermostat
- Temperature Range: Variable
- Power Consumption: 1200W
- Power Supply: 13amp

MODEL	FINISH	CONTAINER CAPACITY	EXTERNAL DIMENSIONS (H x W x D mm)	WEIGHT (kg)
BBM1	Stainless steel construction	3 x GN1/3	255 x 354 x 555 (595*)	13

* including tap



Planetary Mixer

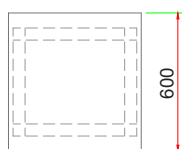
FMX7



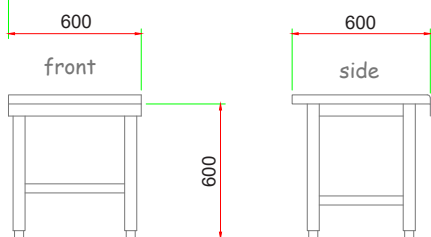
FMX10



FMX20



BZ-MX600



FMX30



FEATURES

- Three speed settings
- Lever operated bowl lift
- Safety stop function
- Bowl guard
- Stainless steel bowl
- Supplied with wire whisk, dough hook & beater

TECHNICAL SPECIFICATIONS

Power Supply: 13amp (FMX7, 10, 20)
15amp (FMX30)

MODEL	FINISH	BOWL CAPACITY	BOWL SIZE (H x Dia. mm)	MAX. FLOUR CAPACITY	EXT. DIMENSIONS (H x W x D mm)	POWER CONSUMPTION	WEIGHT (kg)
FMX7	White; 304 SS bowl	7L	200 x Ø230	0.8 kg	501 x 333 x 430	650W	20
FMX10	Silver; 304 SS bowl	10L	227 x Ø250	2.5 kg	612 x 383 x 456	550W	45
FMX20	Silver; 304 SS bowl	20L	300 x Ø320	5.0 kg	755 x 505 x 550	1100W	108
FMX30	Silver; 304 SS bowl	30L	341 x Ø364	7.0 kg	1138 x 605 x 620	1500W	180

Mixer Table

MODEL	FINISH	EXT. DIMENSIONS (H x W x D mm)
BZ-MX600	Mixer table - all models 304 grade SS	600 x 600 x 600



Why Choose a Blizzard Combination Oven

BENEFITS

- Simple and easy to use
- Faster cooking times
- Combination of roast and steam
- Less product shrinkage means more savings, more profit
- Perfect regeneration of meals using steam and heat
- Fan assisted oven roasting
- Steaming rice, vegetables etc.
- No expensive repair bills for circuit boards

IMPORTANT NOTES

Water pressure and water quality can affect the operation of any combination steam oven. It is recommended that a water pressure regulator is fitted to the water supply to ensure the correct water pressure is achieved, this will avoid unnecessary waste and improve efficiency.

It is recommended that a water quality test is carried out to ensure the correct water filter is obtained, it is not only the water hardness that can be an issue, high silicates and chloride levels which can be found in water can adversely affect the ovens performance.

Faults attributed to poor water quality are not covered under the manufacturer's warranty.

Hand shower supplied as standard on all models



Easy to use mechanical controls



Accessories

MODEL	DESCRIPTION
STAND02	Stand suitable for RDA105E & RDA110E
Z9-RATCTU18	Water treatment unit suitable for all models
TUNDISH	Suitable for all models

Note: If optional extras sold separately, there is a delivery charge of £10.95+ VAT

Z9-RATCTU18



TUNDISH



Operation Guide Video



Easy to clean internal glass



RDA Simple Snack Range

Supplied with **hand shower**
and fitting kit

RDA105E



RDA110E



RDA115E



FEATURES

- High grade 304 stainless steel interior & exterior
- Accepts GN1/1 containers
- Compact footprint
- Internal illumination
- Left hand hinged as standard - right hand hinged available as special order
- Supplied with one shelf, tray slides spaced 67mm apart
- Steam generated by direct system
- Cool down cycle to rapidly cool the chamber
- Rounded corners of cooking chamber for easy cleaning
- Manual humidity control flap
- Silicone rubber door gasket to resist high temperatures - easy to replace
- Door handle with opening from both left and right
- Adjustable lock to guarantee the steam tight sealing of the chamber gasket
- Supplied with hand shower and fitting kit (to be fitted onsite by installer)
- Height adjustable feet
- Easy to use with none complicated controls

TECHNICAL SPECIFICATIONS

- Controller: Mechanical controls
Timer - 0 - 120 minutes
- Temperature Range: +50°C ~ +270°C

4 x COOKING MODES

- 1) Convection only: 50°C ~ 270°C
- 2) Full steam with variable temp: 50°C ~ 100°C
- 3) Combination with full steam: 50°C ~ 270°C
- 4) Combination with variable steam injection: 50°C ~ 270°C

MODEL	CONTAINER CAPACITY	NET CAPACITY	WATER CONSUMPTION /HR	EXT. DIMENSIONS (H x W x D mm)	POWER CONSUMPTION	WEIGHT (kg)
RDA105E	5 x GN 1/1	89L	Steam mode 14L / hr at 2 bar	600 x 710 x 830	6000W - 1 phase	82
RDA110E	10 x GN 1/1	169L		950 x 710 x 830	12,200W - 3 phase	121
RDA115E	15 x GN 1/1	272L		1660 x 750 x 850	18,000W - 3 phase	192.5





SERVICE EQUIPMENT

Catering Urns | Water Boilers

Ensure there's enough hot water to go around with our catering urns and auto boilers. Perfect for any application we offer a variety of sizes to suit your service needs.

Catering Urns



MF10



MF20



MF30



MF40

Adjustable thermostat temperature control

FEATURES

AISI 304 stainless steel construction for stronger durability

Adjustable thermostat temperature control (+30°C ~ +100°C)

Water level indicator

Concealed element for easy cleaning and maintenance

Note: Warranty is return to base

MODEL	GROSS CAPACITY	EXTERNAL DIMENSIONS (H x Dia mm)	POWER CONSUMPTION	WEIGHT (kg)
MF10	10 L	405 x 290 diameter	2000W	3.4
MF20	20 L	523 x 310 diameter	2500W	4.5
MF30	30 L	420 x 390 diameter	3000W	5.2
MF40	40 L	523 x 390 diameter	3000W	5.9



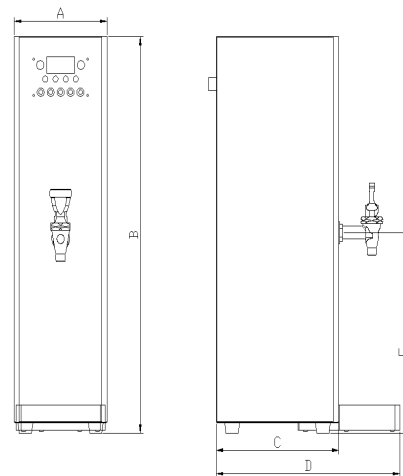
Autofill Water Boiler

AF10



NOTE

We strongly recommend a water filter is installed in line with the water supply. Please see recommended accessories below.



Model	A (MM)	B (MM)	C (MM)	D (MM)	E (MM)
AF10	190	630	240	360	300

FEATURES

- Stainless steel construction
- 13 amp UK plug top fitted as standard
- Comes with 3/4" BSP water inlet hose
- Height of tap facilitates the filling of tall teapots
- Drip tray included
- Adjustable digital temperature controller
- Electronic timer enables programming to automatically switch on and off during one time period
- Robust heavy duty tap designed for constant use

RECOMMENDED ACCESSORIES

Water filter kit IX01 incl. head, bracket, assembled cartridge & refill	F1-IXVENDKIT
---	--------------

MODEL	CAPACITY	PRODUCTIVITY	WATER PRESSURE	EXT. DIMENSIONS (H x W x D mm)	POWER CONSUMPTION	WEIGHT (kg)
AF10	10 L	35L/hour	0.2 - 0.4 MPA	630 x 190 x 360	2500W	9





Storm 40

WAREWASHING

Glasswashers | Dishwashers | Passthrough

One of your most used pieces of kit needs the most attention and our range of warewashing equipment are built to last with consideration for every eventuality whether a small compact space or large open washing station you're sure to find the equipment perfect for you.

Storm Glasswashers



FEATURES

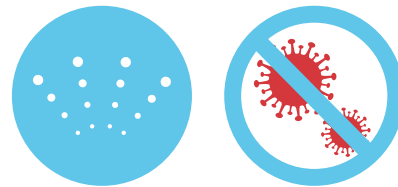
- High grade 304 stainless steel construction
- Pressed tank and rounded corners to aid cleaning of machine
- Double skin door for quieter running and improved efficiency
- Rotating wash and rinse arms removable for cleaning
- Automatic detergent and rinse aid dosing
- 3 cycles - 90/120/180 secs
- Thermo-stop** ensures a hot rinse temperature on every cycle
- Adjustable wash and rinse thermostats
- 3/4" BSP water inlet hose included
- UK 13A plug fitted
- STORM50 models - can be upgraded by changing mains supply cable to 30A single phase or 15A 3phase power supply
- Supplied with 2x glass baskets and 1x cutlery holder
- Gravity and integral drain pump models available
- Manual COLD rinse option (STORM40 and 40DP models only)
- Cold or Hot water supply max 60°C at 2 – 4bar (excl. STORM40)

OPTIONAL EXTRAS

Manual water softener	F1-DEP12
Auto water softener	CEPSS-1300
Water inlet hose (1.5 metre)	P1-3510
350mm x 350mm glass basket	B8-12024550
400mm x 400mm glass basket	B8-12025069
500mm x 500mm glass basket	B8-12025011
Universal stand	G2-STU

Thermo-stop

Thermo-stop feature ensures the cycle cannot be completed until the rinse water temperature has achieved sanitising temperatures above 82°C.



STORM35



STORM35DP



STORM40DP



STORM40



Storm Glasswashers

Recessed door handle

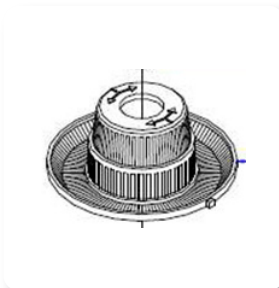
Ergonomically designed door handle for easy opening and a flush finish.



Easy cleaning & maintenance

Easy to clean interior with rounded corners in wash tank, removable wash and rinse arms and specially designed wash filter (catches and contains debris within bottom flange).

Reducing the risk of debris falling into the wash pump or drain when the filter is removed for cleaning.



User-friendly control

Intuitive electro-mechanical control panel built with on/off and 3 cycle selection buttons.



IMPORTANT NOTES

If you are installing a glass or dishwasher in a hard water area, we recommend you to fit a water softener. Faults attributed to poor water quality are not covered under the manufacturer's warranty.

F1-DEP12



STORM50



STORM50DP



MODEL	PIECES /CYCLE	GLASS MAX HEIGHT	WATER USAGE	BASKET SIZE (mm)	EXT. DIMENSIONS (H x W x D mm)	POWER CONSUMPTION	WEIGHT (kg)
STORM35	13 pint glasses	220mm	2L	350 x 350	650 x 430 x 475	2.7 KW	37
STORM35DP	13 pint glasses	220mm	2L	350 x 350	650 x 430 x 475	2.7 KW	40
STORM40	16 pint glasses	270mm	2.5L	400 x 400	720 x 470 x 520	2.7 KW	44
STORM40DP	16 pint glasses	270mm	2.5L	400 x 400	720 x 470 x 520	2.7 KW	47
STORM50	25 pint glasses	320mm	2.7L	500 x 500	820 x 600 x 600	2.6KW (* 6.2KW)	67
STORM50DP	25 pint glasses	320mm	2.7L	500 x 500	820 x 600 x 600	2.6KW (* 6.2KW)	70

Power conversion charge (STORM50)

based on 90mm diameter pint glass

* Can be upgraded by changing mains supply cable to 30A single phase or 15A 3phase power supply



See page 106 for optional stands

Storm Dishwashers



FEATURES

- High grade 304 stainless steel construction
- Pressed tank and rounded corners to aid cleaning of machine
- Double skin door for quieter running and improved efficiency
- Rotating wash and rinse arms removable for cleaning
- Fitted with break tank and rinse booster
- Surface filters as standard
- Automatic detergent and rinse aid dosing
- 3 cycles - 90/120/180 secs
- Thermo-stop** ensures a hot rinse temperature on every cycle
- Adjustable wash and rinse thermostats
- ¾" BSP water inlet hose included
- 30A power supply
- Can be converted by changing mains supply cable to a 15A 3phase power supply or downgraded* to 13 amp single phase plug top version
- Supplied with 1x glass basket, 1x dish basket, 1x cutlery holder
- Gravity and integral drain pump models available
- Cold or Hot water supply max 60°C at 2 – 4bar

OPTIONAL EXTRAS

Manual water softener	F1- DEP12
Auto water softener	CEPSS-1300
Water inlet hose (1.5 metre)	P1-3510
500mm x 500mm glass basket	B8-12025011
500mm x 500mm plate basket	B8-12024990
Universal stand	G2-STU

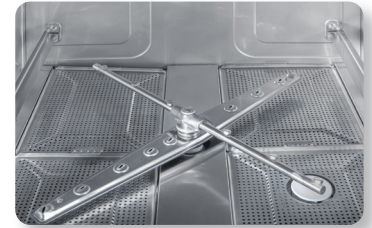
Note: If optional extras sold separately, there is a delivery charge of £10.95+ VAT

Break Tank

The Blizzard Storm Dishwasher, includes a WRAS approved Integrated breaktank which is compliant with the [Water Supply \(Water Fittings\) Regulations in England, Wales and Northern Ireland](#) and under the [Water Supply \(Water Fittings\) Byelaws in Scotland](#).

Surface Filters

Fitted on all BT Dishwashers, surface filters provide a second level of protection preventing larger debris entering the wash tank.



STORM50BT



STORM50BTDP



IMPORTANT NOTES

If you are installing a glass or dishwasher in a hard water area, we recommend you to fit a water softener. Faults attributed to poor water quality are not covered under the manufacturer's warranty.

WAREWASHING

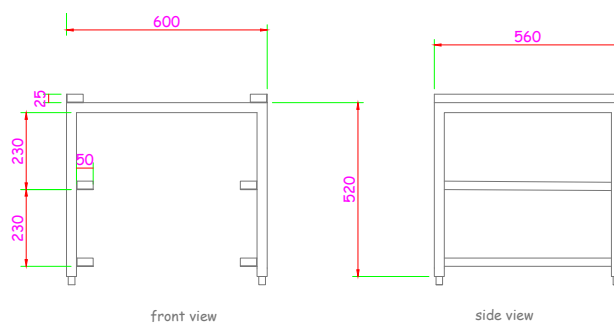
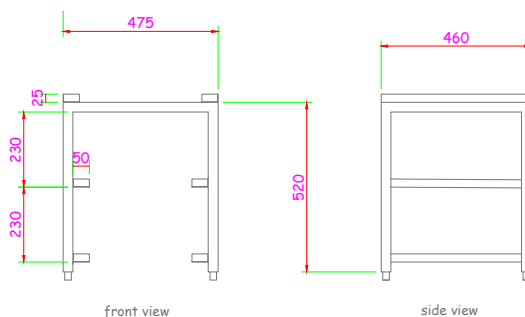
MODEL	PIECES /CYCLE	PLATE MAX DIA.	WATER USAGE	BASKET SIZE (mm)	EXT. DIMENSIONS (H x W x D mm)	POWER CONSUMPTION	WEIGHT (kg)
STORM50BT	18 dishes	320mm	2.7L	500 x 500	820 x 600 x 600	6.2KW (* 2.6KW)	71
STORM50BTDP	18 dishes	320mm	2.7L	500 x 500	820 x 600 x 600	6.2KW (* 2.6KW)	74

Power conversion charge (STORM50)



Can be converted by changing mains supply cable to a 15A 3phase power supply or downgraded* to 13 amp single phase plug top version

Stand for Glasswashers & Dishwashers



FEATURES

304 Stainless steel construction

Quality & robust construction

Adjustable feet, height ranges from 527mm to 577mm

Manufactured for use with any 400mm or 500mm Glasswashers & Dishwashers

MODEL	DESCRIPTION	EXTERNAL DIMENSIONS (H x W x D mm)
BZ-STORM40STAND-FEET	Stand for Storm 40 with 2 x basket rack - 304 grade SS	527 x 475 x 460
BZ-STORM50STAND-FEET	Stand for Storm 50 with 2 x basket rack - 304 grade SS	527 x 600 x 560



Storm Passthrough Dishwasher



FEATURES

- High grade 304 stainless steel construction
- Pressed tank and rounded corners to aid cleaning of machine
- Powerful wash performance using two high powered wash pumps
- AA Air gap-Integrated break tank to conform with water regulations
- Rotating wash and rinse arms removable for cleaning
- Fitted with detergent pump, rinse-aid pump, rinse booster pump, break tank and drain pump
- Stainless steel surface filters plus secondary filter to reduce blockages
- Automatic detergent and rinse aid dosing
- 3 cycles - 55 / 75 / 120 secs; plus a permanent wash function
- Configurable power supply, to suit either a 60A / 40A / 30A single phase or 20A 3 phase power supplies. **NOTE - The installer must supply and install the electrical supply cable to the machine**
- Supplied with 1x plate basket (holds 18 plates), 1 x cup basket, 2 x cutlery basket
- Can be configured to corner or straight configuration
- Auto start when hood is closed
- Adjustable feet

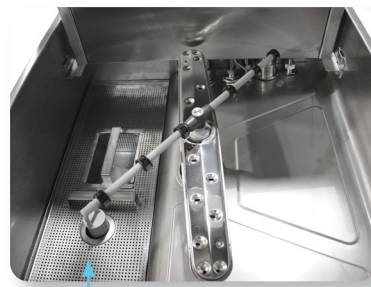


400mm
loading height

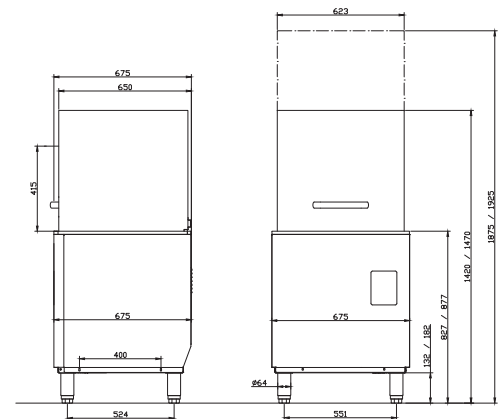
IMPORTANT NOTES

If you are installing a glass or dishwasher in a hard water area, we recommend you to fit a water softener. Faults attributed to poor water quality are not covered under the manufacturer's warranty.

One of the most compact depth (675mm) passthrough dishwashers on the market to enable it to replace most hood type dishwashers



Fitted with surface filter



WAREWASHING

MODEL	BASKETS /HR	LOADING HEIGHT	WATER USAGE	BASKET SIZE (mm)	POWER CONSUMPTION	EXT. DIMENSIONS (H x W x D mm)	WEIGHT (kg)
STORM100BTDP	65*	400mm	3L	500 x 500	13.2KW	1440 x 675 x 675	124
BZ-SIDE650	Dishwasher table - left /right or front fitting - 304 grade SS					830 x 650 x 633	-
BZ-SIDE1250	Dishwasher table - left /right or front fitting - 304 grade SS					830 x 1250 x 633	-
BZ-TROLLEY	Trolley for dishwasher baskets (Qty 3) 304 grade SS					750 x 560 x 560	-

* based on full electrical power



Storm Dishwasher Table & Trolley



FEATURES

304 Stainless steel construction

Suitable for left hand, right hand or front fitting

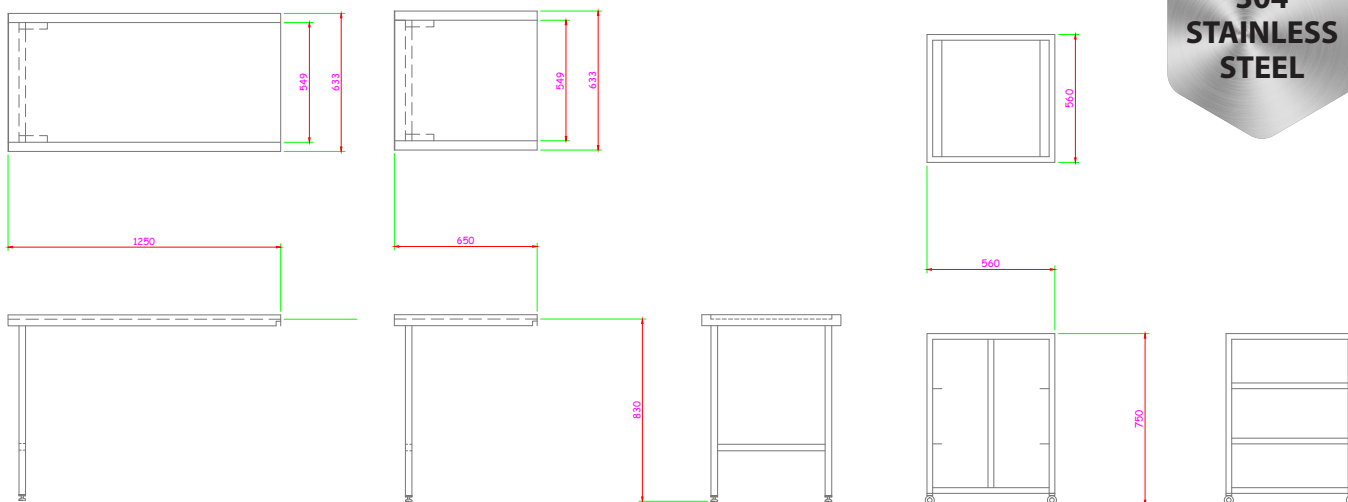
Quality & robust construction

Table - adjustable legs

Trolley - castors



Manufactured for use with
Blizzard Storm Passthrough
Dishwasher



MODEL	DESCRIPTION	EXTERNAL DIMENSIONS (H x W x D mm)
BZ-SIDE650	Dishwasher table - left /right or front fitting - 304 grade SS	830 x 650 x 633
BZ-SIDE1250	Dishwasher table - left /right or front fitting - 304 grade SS	830 x 1250 x 633
BZ-TROLLEY	Trolley for dishwasher baskets (Qty 3) 304 grade SS	750 x 560 x 560



EXCLUSIVELY AVAILABLE FROM

